

# THE HOLLY

A spectacular two-story foyer offers charming views of the open staircase and leads to a formal dining room which is accented by decorative columns and a beautiful coffered ceiling. A barrel vault ceiling provides a stunning transition into the formal living area that features a rear gallery with a pair of double French doors that open to a covered lanai and a sun patio.

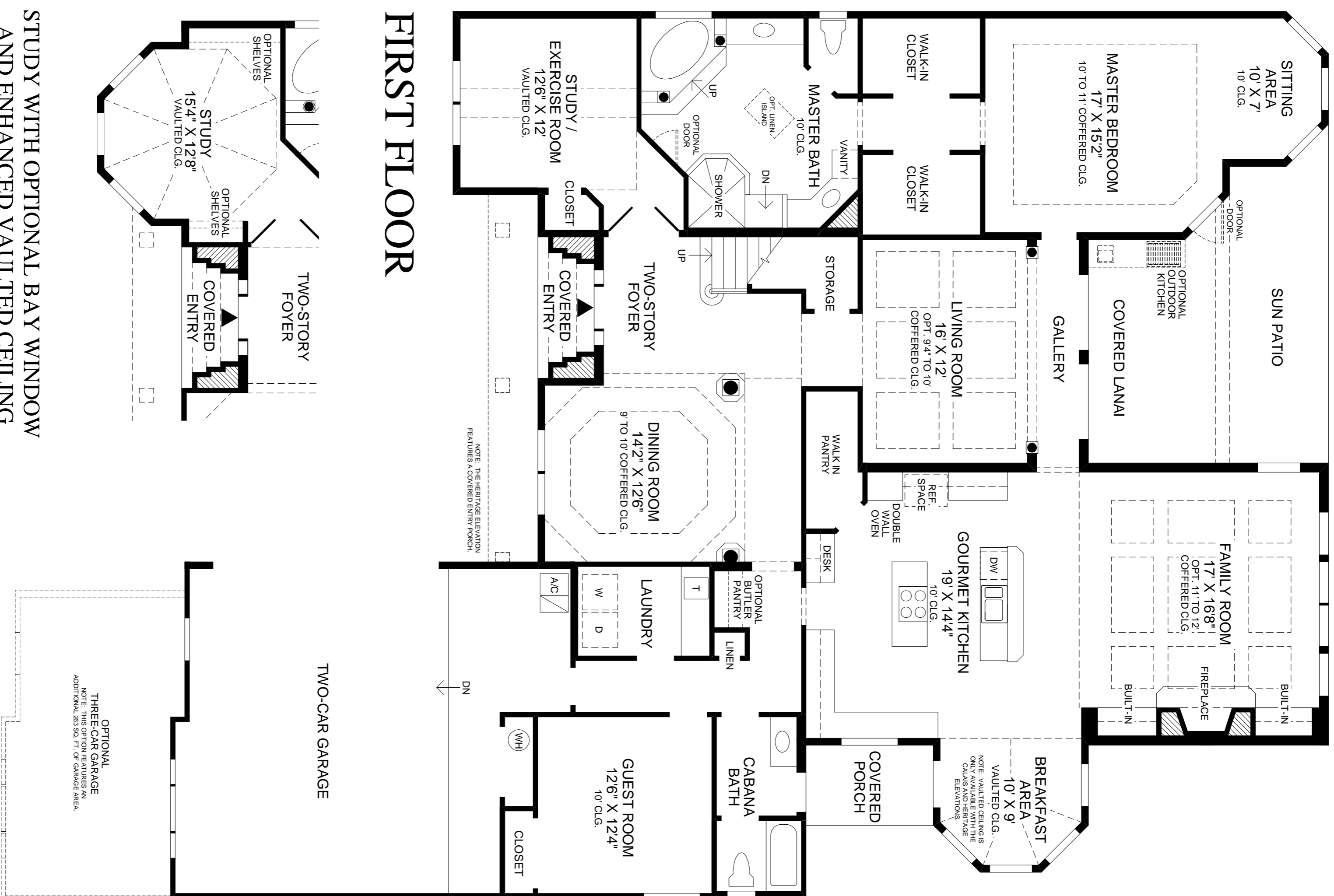
The gourmet kitchen boasts a center island with cook top, large walk-in pantry, and raised snack bar that adjoins with a sunlit breakfast area and an expansive family room with a custom fireplace. This wing of the home also includes a guest room and a cabana bath with convenient access to a private side yard entry.

The master bedroom suite features a sitting area with bay windows, coffered ceiling, two walk-in closets and an opulent master bath with his-and-her vanities, Roman tub, separate shower, and private water closet. A quiet study with a double-door entry is located near the master suite and could be used as an exercise room.

Upstairs, three additional bedrooms and two baths share a roomy loft that overlooks the foyer below and a large covered balcony that faces the rear yard. This home is further enhanced by a separate laundry room and a two-car courtyard garage.

First Floor	2922 sq. ft.
Second Floor	1348 sq. ft.
Air Conditioned Living Area	4270 sq. ft.
Covered Lanai and Porch	216 sq. ft.
Covered Entry	120 sq. ft.
Garage	618 sq. ft.
Balcony	163 sq. ft.
Total	5387 sq. ft.

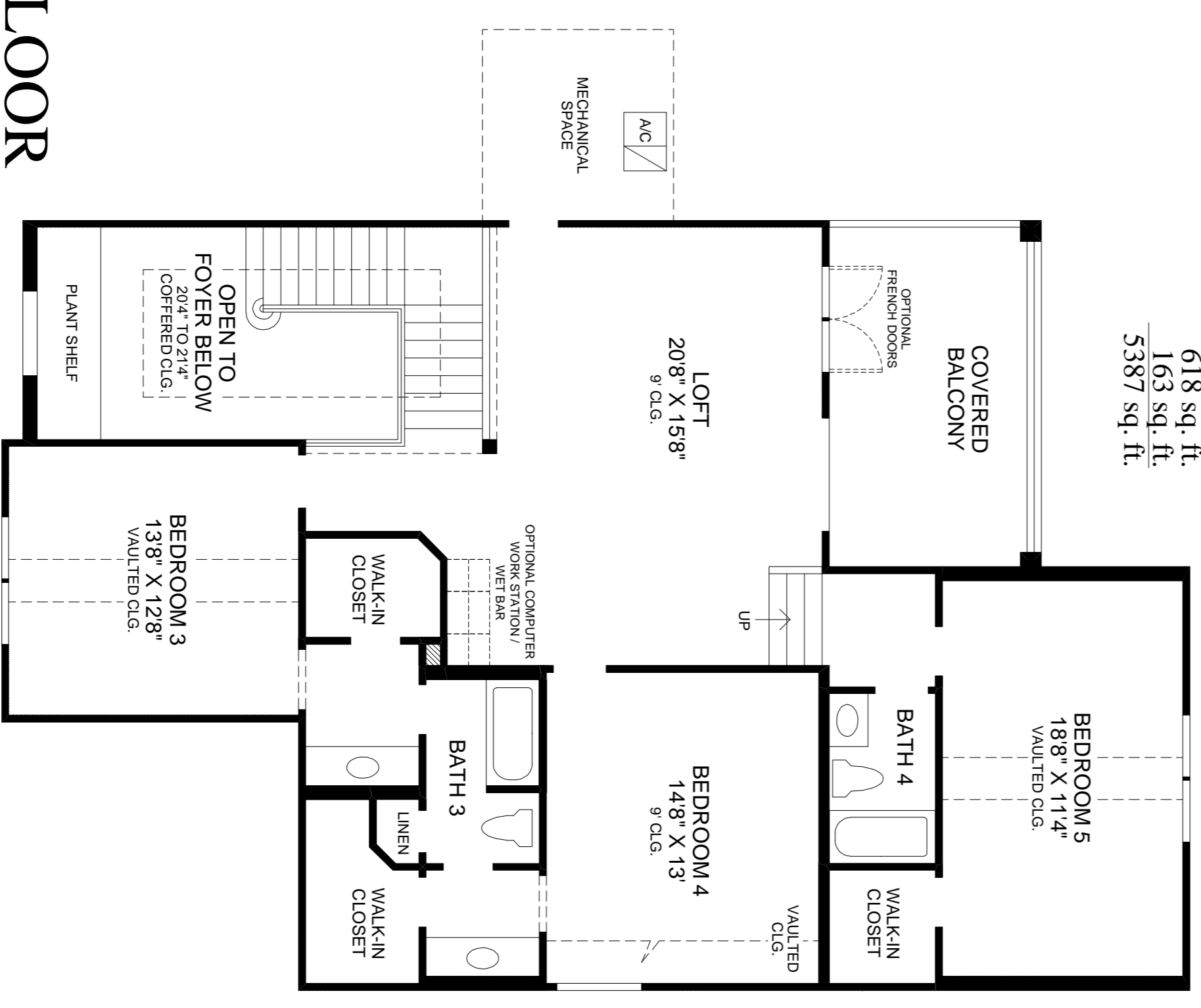
DRAFT



## FIRST FLOOR

STUDY WITH OPTIONAL BAY WINDOW AND ENHANCED VAULTED CEILING

## SECOND FLOOR



All dimensions are approximate, shown to the maximum dimensions of each room, and are subject to field variation. Dimensions should not be used to calculate room square footage. Some windows, exterior features, ceiling heights, and floor plans may vary with elevations. Features may also vary from community to community. Please consult a Sales Manager for details. Options purchased must be specified in exhibit B.

(PLN\_MASTER\_0620 ©2006 TOLL BROTHERS, INC. (HLLY))

**Toll Brothers**  
America's Luxury Home Builder™  
tollbrothers.com



The floor plans and elevations of Toll Brothers homes are copyrighted. We have enforced and will continue to enforce our federal copyrights to protect the investment of our home buyers.

This insert was produced using recycled products. ♻️