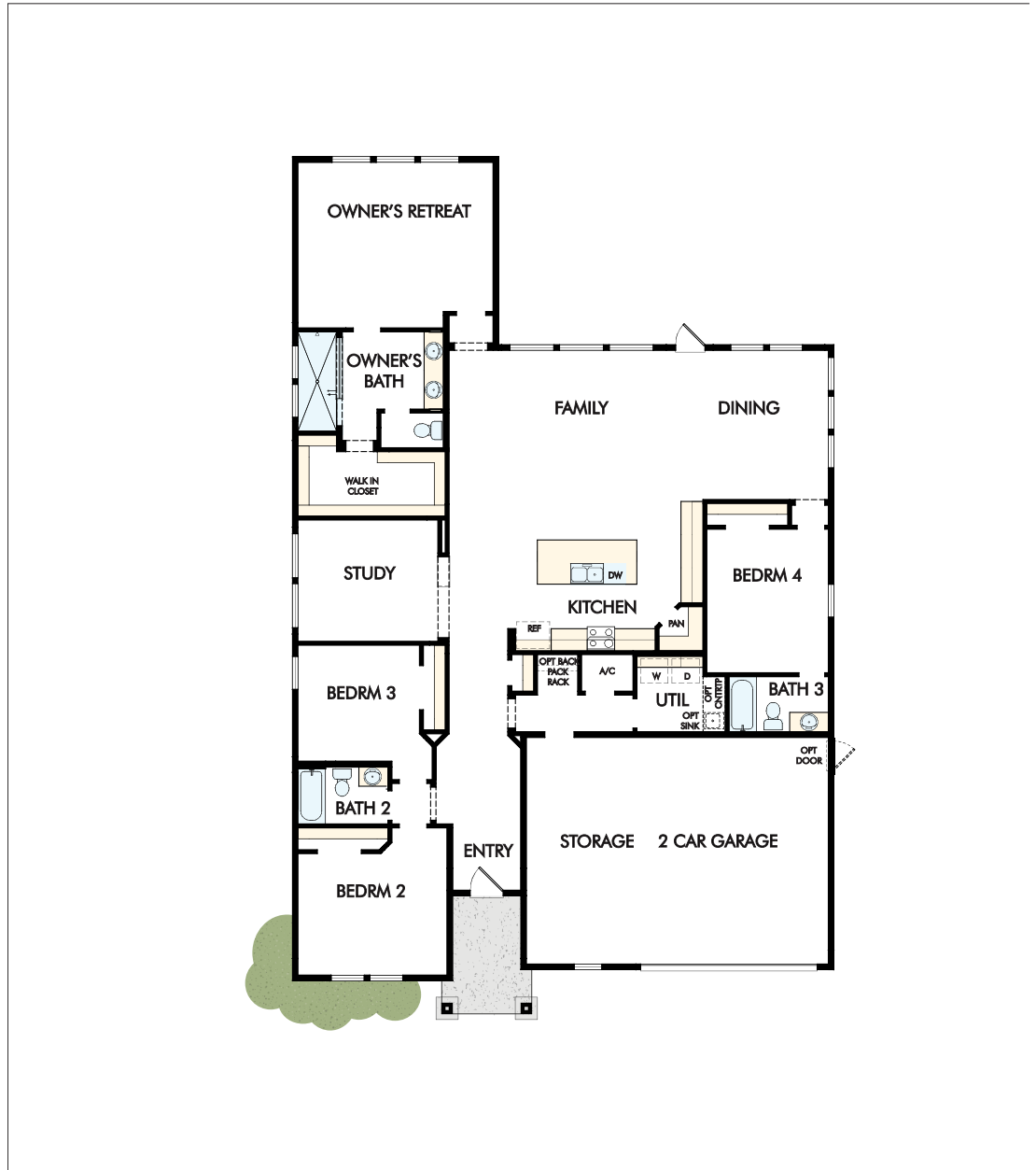


From \$555,900.00 | 2474 sq. ft. | 1 Story | 4 Bedrooms | 3 Bathrooms | 2 Car Garage

1st Floor

Options

- 3 Car Garage
- Extended Lanai
- French Doors at Study
- Kitchen Layout
- Lanai
- Owner Bath Layout
- Shower at Bath 2
- Shower at Bath 3
- Single Door at Owner's Bath
- Sliding Glass Door at Dining
- Sliding Glass Door at Family
- Tray Ceiling at Dining
- Tray Ceiling at Owner's Retreat
- Tray Ceiling in Study
- Uncovered Concrete Patio



Sales Office:

35 Windley Drive, St. Augustine, FL 32092

Hours:

Monday - Saturday 10:00 AM - 6:00 PM

Sunday 12:00 PM - 6:00 PM

or Please Call for an Appointment

Sales Team

Tiki Del Valle (tdelvalle@dwhomes.com)

April Garland (agarland@dwhomes.com)



Figures reflecting size, square footage, and other dimensions are estimates; actual construction may vary. Size/square footage and price of your home may vary based on bonus rooms and options selected. Floor plans may vary according to elevation. Prices, plans, dimensions, features, specifications, materials, and availability of homes or communities are subject to change without notice or obligation. Please contact us to verify current information. Illustrations are artist's depictions only. They may differ from completed improvements and may change without notice.