



4

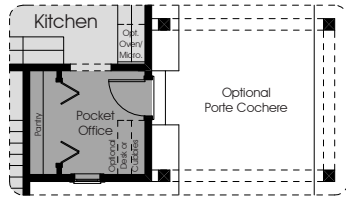


3

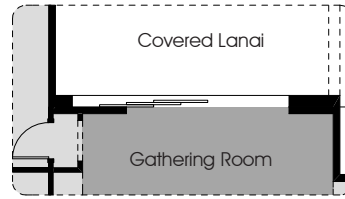


2

1ST FLOOR A/C:	2112
2ND FLOOR A/C:	798
TOTAL A/C:	2910
COVERED PORCHES:	498
GARAGE:	552



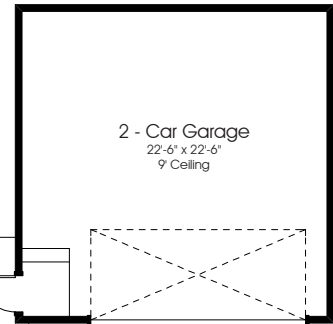
Optional Porte Cochere



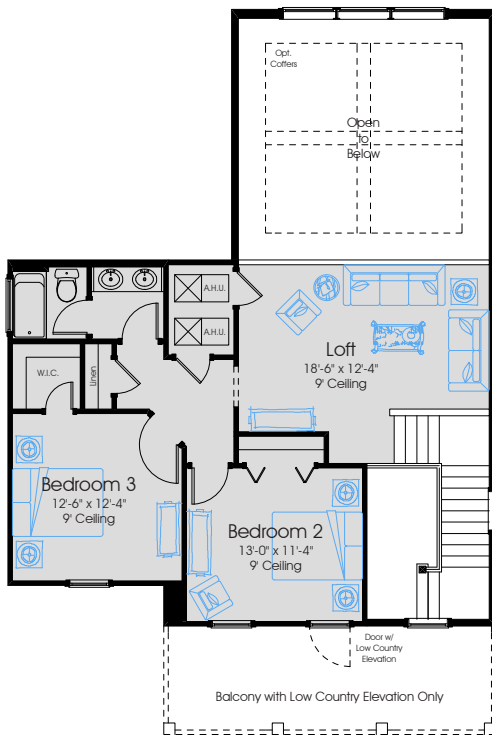
Optional 12' x 8' Stacking Slider



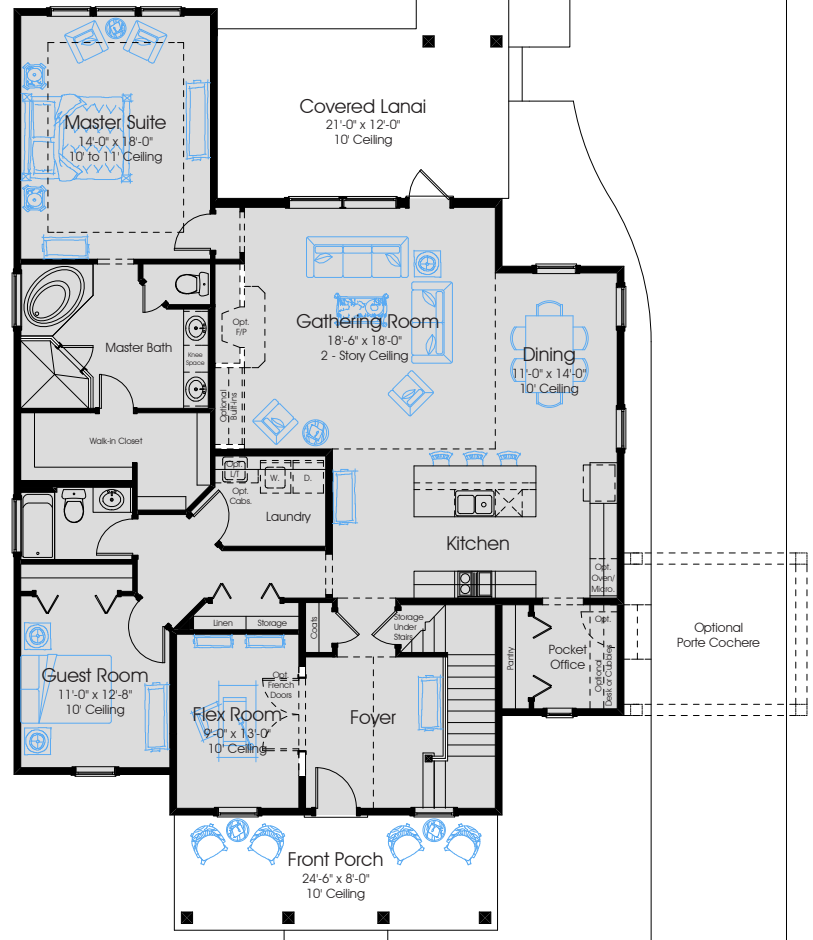
Opt. Home Office
I/O Guest Room



2 - Car Garage
22'-6" x 22'-6"
9' Ceiling



Second Floor Plan



First Floor Plan

