

THE CHARLESTON

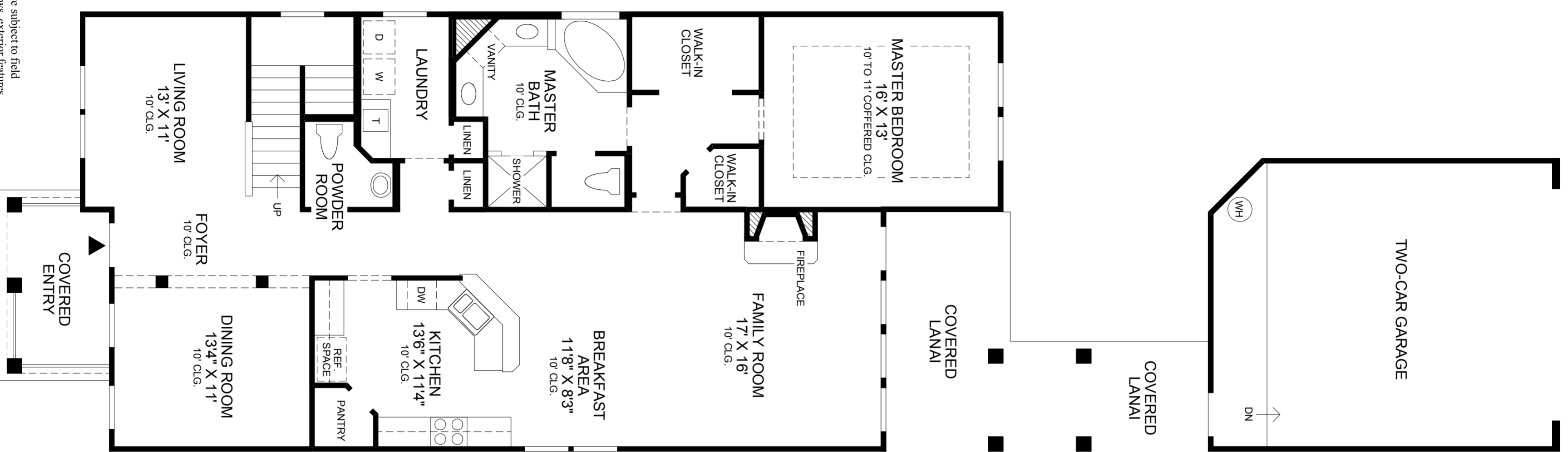
The welcoming foyer of this charming home is flanked by a lovely living room and a formal dining room which is accented by a beautiful arched opening.

The well-appointed kitchen features a separate pantry and raised snack bar that overlooks a cozy breakfast area and a spacious family room with custom fireplace.

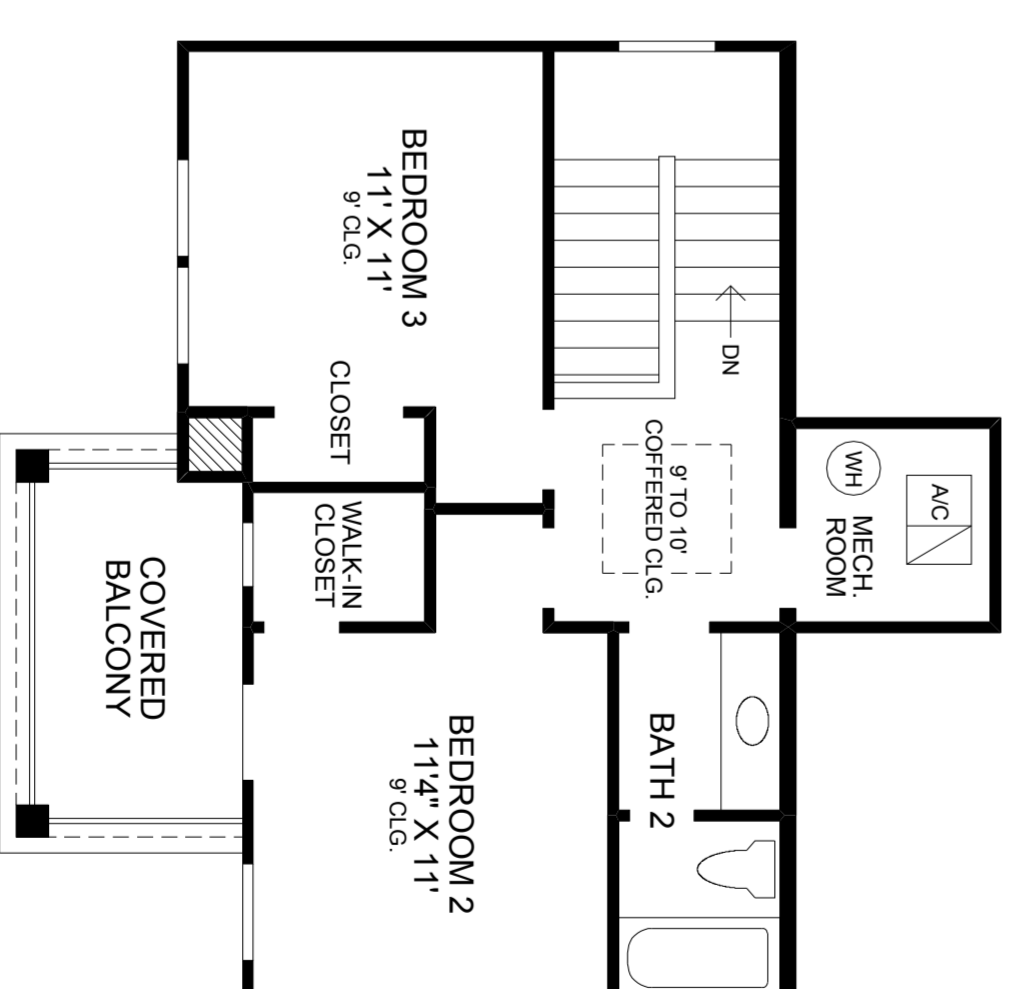
The luxurious master bedroom suite includes two walk-in closets and an opulent master bath with his-and-her vanities, Roman tub, separate shower, and private water closet.

Upstairs, two additional bedrooms share a large full bath while one has access to a private covered balcony. Other highlights of this neo-traditional home include a separate laundry room and an expansive covered lanai which joins the main house with a two-car garage.

First Floor	1727 sq. ft.
Second Floor	468 sq. ft.
Air Conditioned Living Area	2195 sq. ft.
Covered Lanai	229 sq. ft.
Covered Entry	82 sq. ft.
Covered Balcony	82 sq. ft.
Garage	473 sq. ft.
Total	3061 sq. ft.



FIRST FLOOR



SECOND FLOOR

DRAFT

All dimensions are approximate, shown to the maximum dimensions of each room, and are subject to field variation. Dimensions should not be used to calculate room square footage. Some windows, exterior features, ceiling heights, and floor plans may vary with elevations. Features may also vary from community to community. Please consult a Sales Manager for details. Options purchased must be specified in exhibit B.

(MASTER)_0330 ©2006 TOLL BROTHERS, INC. (CHTN)

Toll Brothers
America's Luxury Home Builder™
tollbrothers.com



The floor plans and elevations of Toll Brothers homes are copyrighted. We have enforced and will continue to enforce our federal copyrights to protect the investment of our home buyers.

This insert was produced using recycled products.