

THE FREEPORT

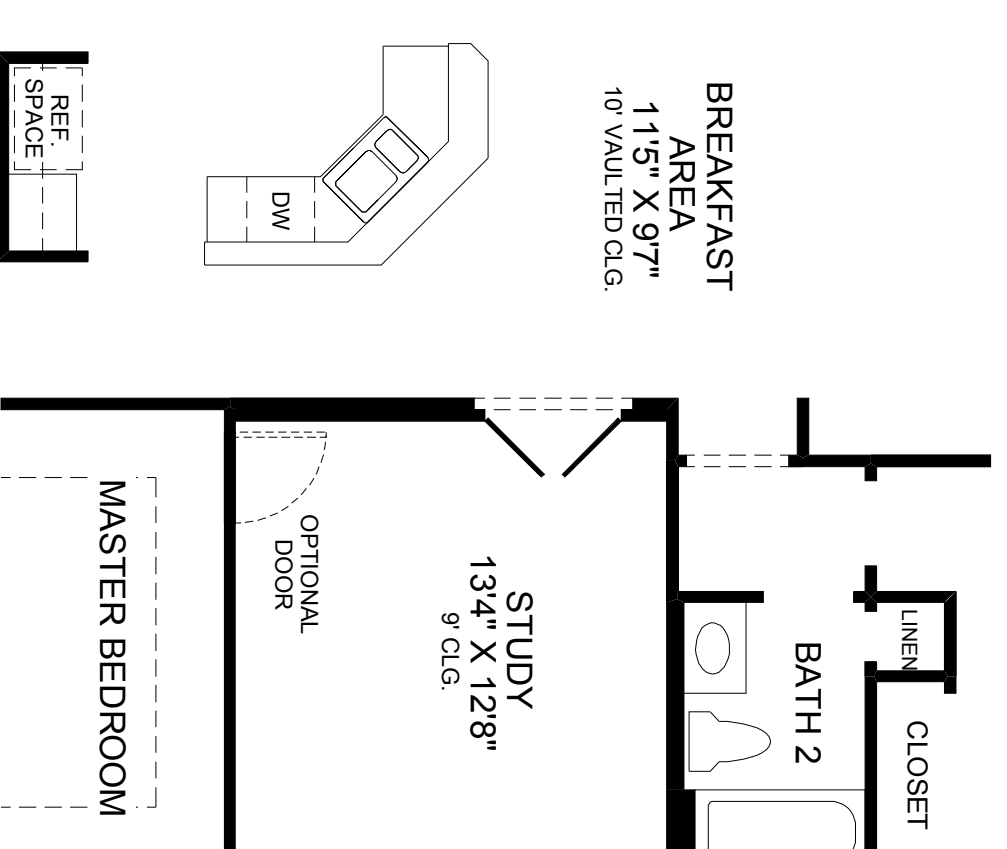
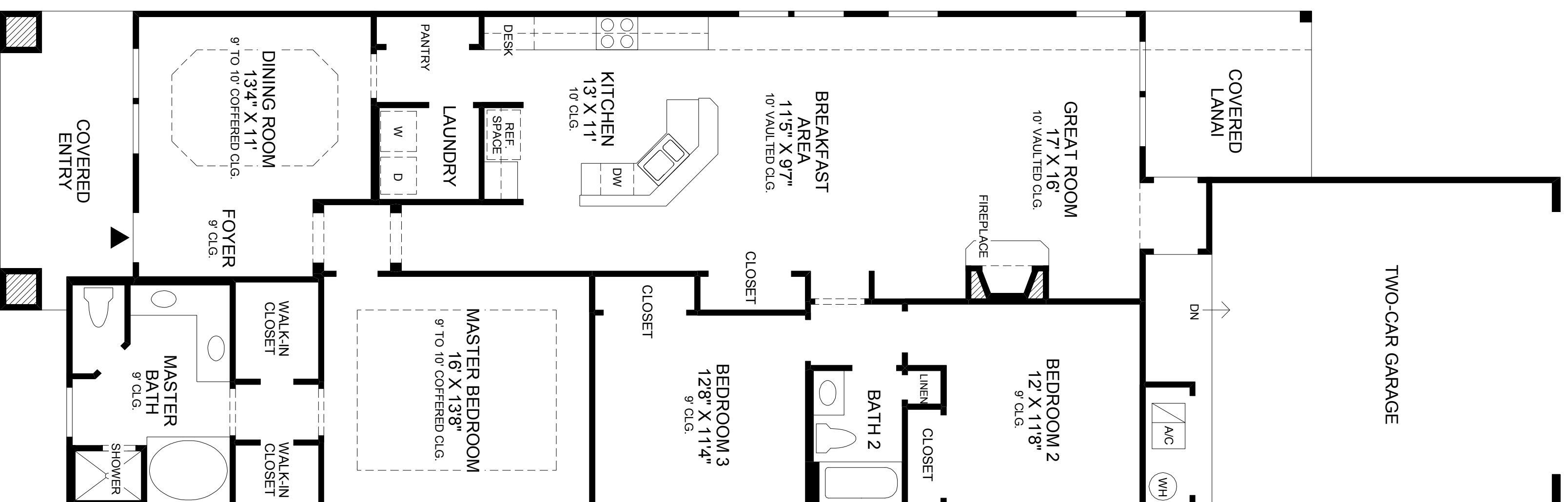
The inviting covered entry of this neo-traditional home opens to a charming formal dining room with beautiful coffered ceiling. The well-appointed kitchen is conveniently located to the dining room and features a separate pantry and raised snack bar that overlooks a sunlit breakfast area and large great room with access to the covered lanai.

The elegant master bedroom suite includes a two walk-in closets and a master bath with his-and-her vanities, Roman tub, separate shower, and private water closet.

This lovely home also boasts two additional bedrooms, a second full bath, and two-car garage.

Air Conditioned Living Area	1905 sq. ft.
Covered Lanai	100 sq. ft.
Covered Entry	136 sq. ft.
Garage	481 sq. ft.
Total	2622 sq. ft.

DRAFT



OPTIONAL STUDY IN LIEU OF
BEDROOM 3

FLOOR PLAN

All dimensions are approximate, shown to the maximum dimensions of each room, and are subject to field variation. Dimensions should not be used to calculate room square footage. Some windows, exterior features, ceiling heights, and floor plans may vary with elevations. Features may also vary from community to community. Please consult a Sales Manager for details. Options purchased must be specified in exhibit B.

(MASTER)_0324 ©2006 TOLL BROTHERS, INC. (FRF)

Toll Brothers
America's Luxury Home Builder™
tollbrothers.com



The floor plans and elevations of Toll Brothers homes are copyrighted. We have enforced and will continue to enforce our federal copyrights to protect the investment of our home buyers.

This insert was produced using recycled products. ♻️