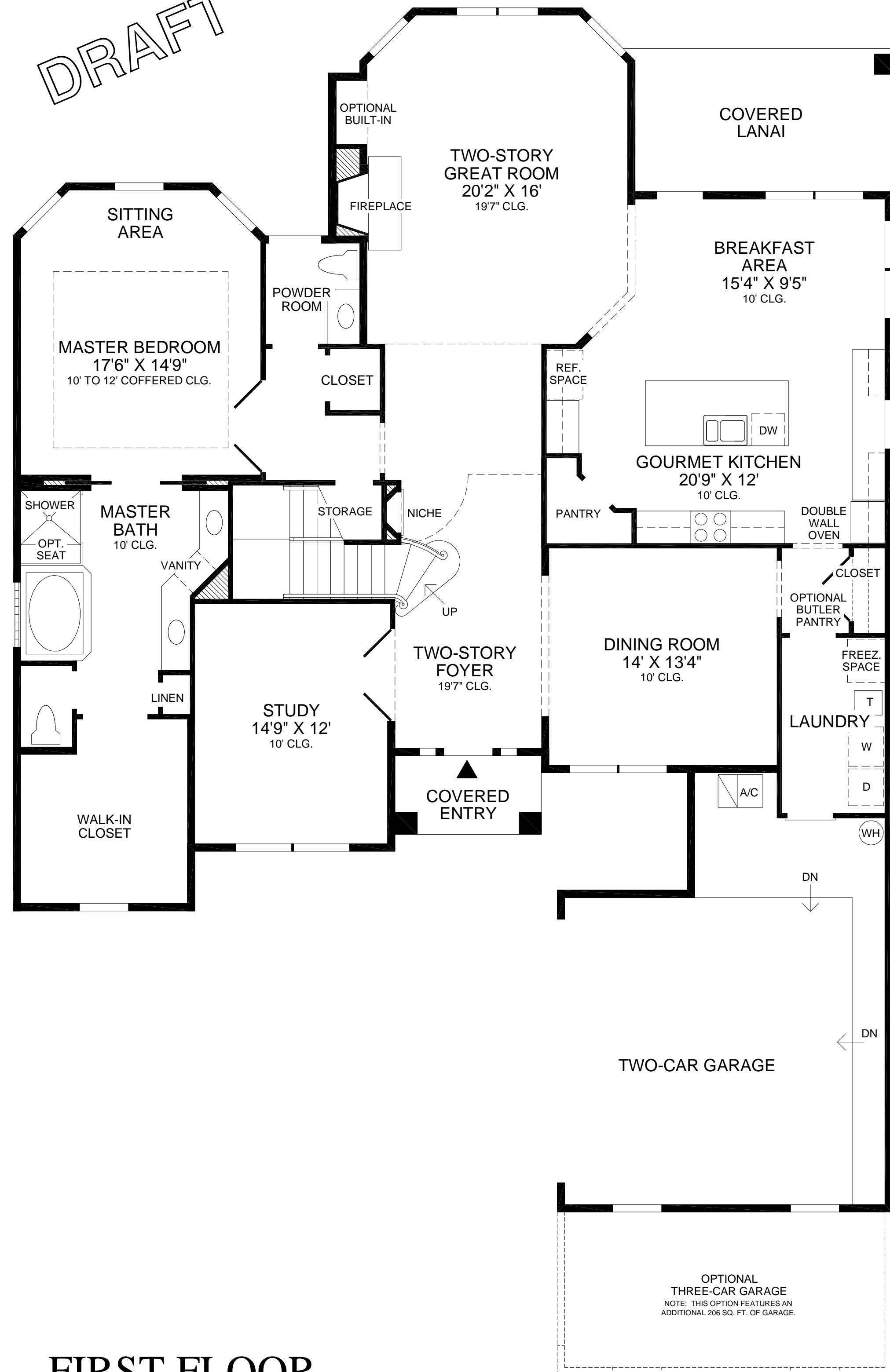


THE SAN LUCCA

DRAFT



FIRST FLOOR

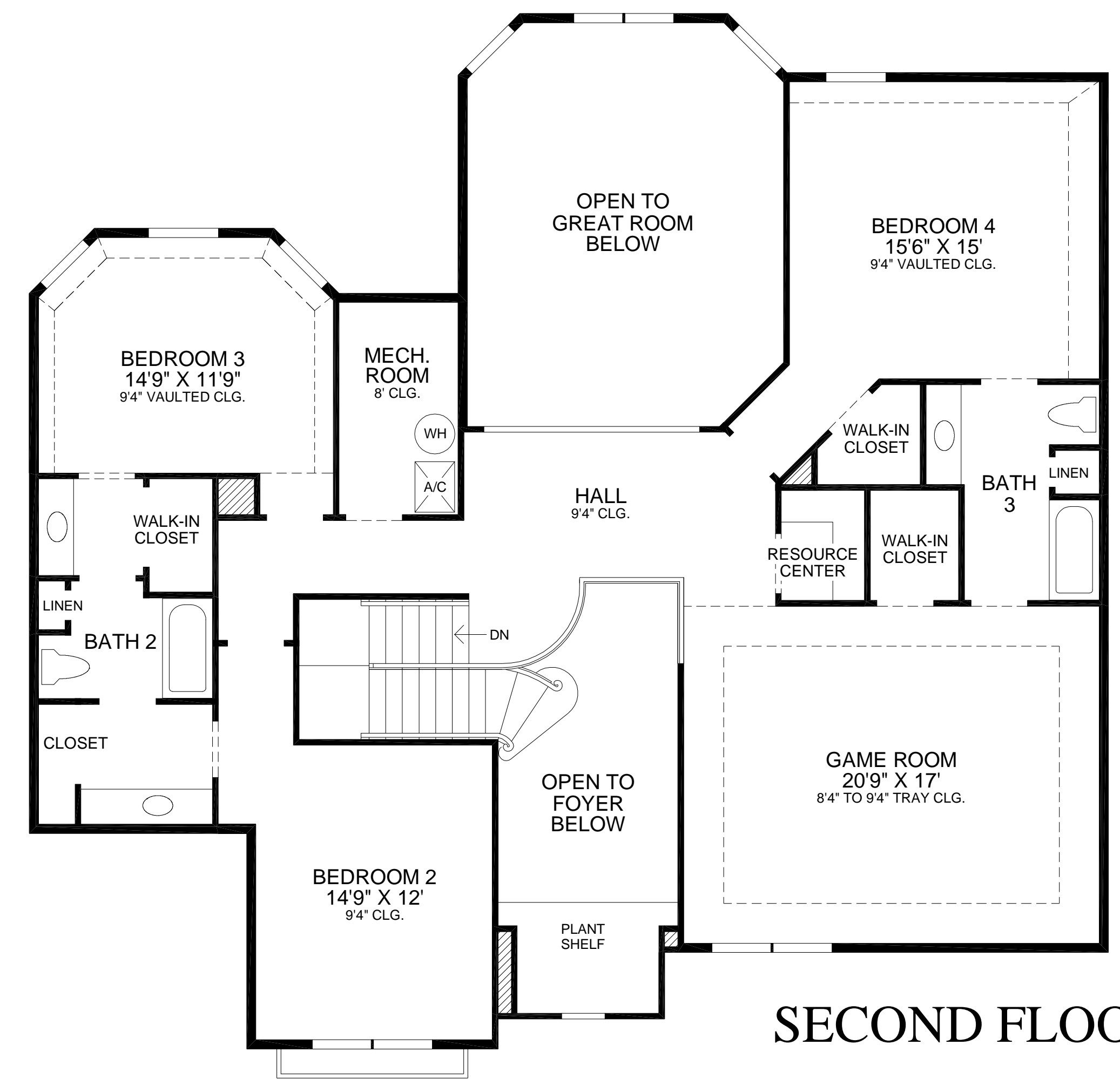
An inviting courtyard entry opens to a soaring two-story foyer which is accented by an impressive turned staircase and leads to a formal dining room and a two-story great room with custom built-in fireplace.

The well-equipped gourmet kitchen boasts a separate pantry and an efficient center island that encompasses a large sunlit breakfast area that has direct access to the covered lanai.

The master bedroom suite includes a sitting area with a bay window, beautiful coffered ceiling, large walk-in closet and a luxurious master bath with a dual-sink vanity with makeup area, Roman tub, separate shower, and a private water closet.

Upstairs, an open bridge offers breathtaking views of the foyer and living areas below and adjoins three bedrooms and two Jack-and-Jill baths. Other highlights of this home include a second floor game room, first floor private study, conveniently located powder room, separate laundry room, and two-car garage.

First Floor	2367 sq. ft.
Second Floor	1750 sq. ft.
Air Conditioned Living Area	4117 sq. ft.
Covered Lanai	132 sq. ft.
Covered Entry	37 sq. ft.
Garage	539 sq. ft.
Total	4825 sq. ft.



SECOND FLOOR

All dimensions are approximate, shown to the maximum dimensions of each room, and are subject to field variation. Dimensions should not be used to calculate room square footage. Some windows, exterior features, ceiling heights, and floor plans may vary with elevations. Features may also vary from community to community. Please consult a Sales Manager for details. Options purchased must be specified in exhibit B.

(FLN-MASTER)_0817 ©2006 TOLL BROTHERS, INC. (SLCA)



The floor plans and elevations of Toll Brothers homes are copyrighted. We have enforced and will continue to enforce our federal copyrights to protect the investment of our home buyers.

This insert was produced using recycled products.