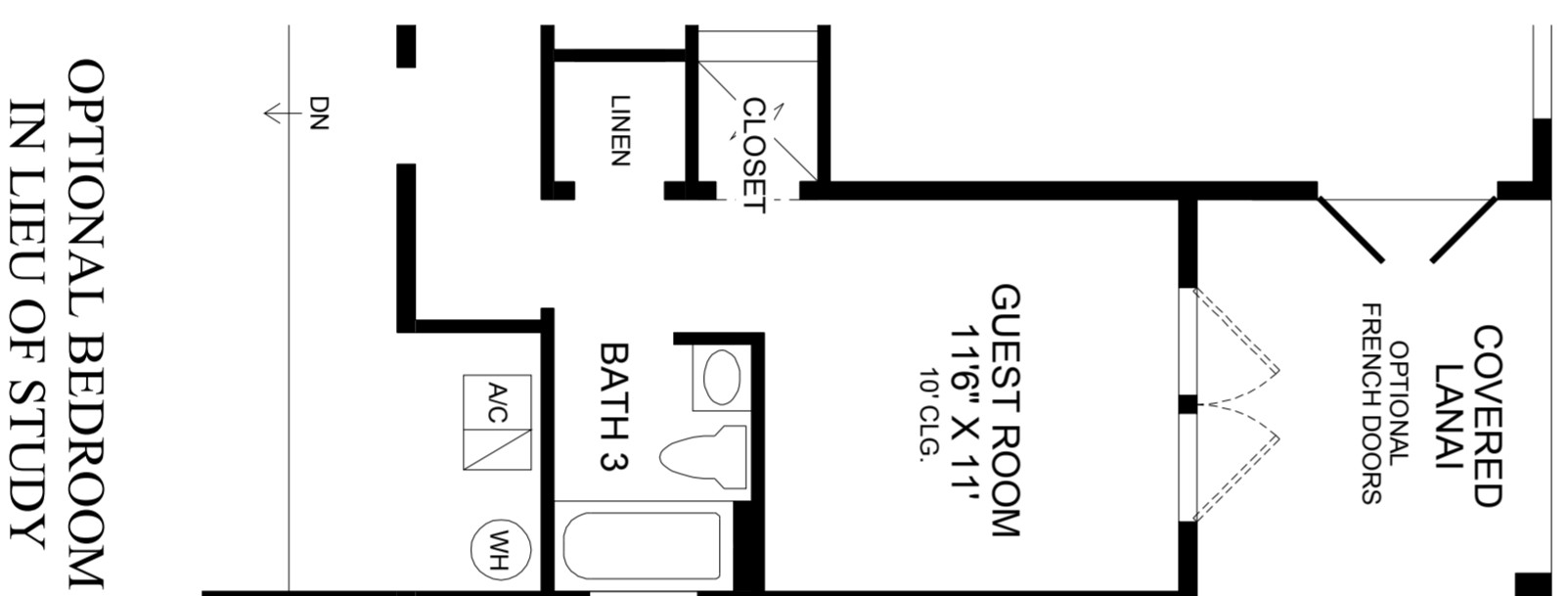
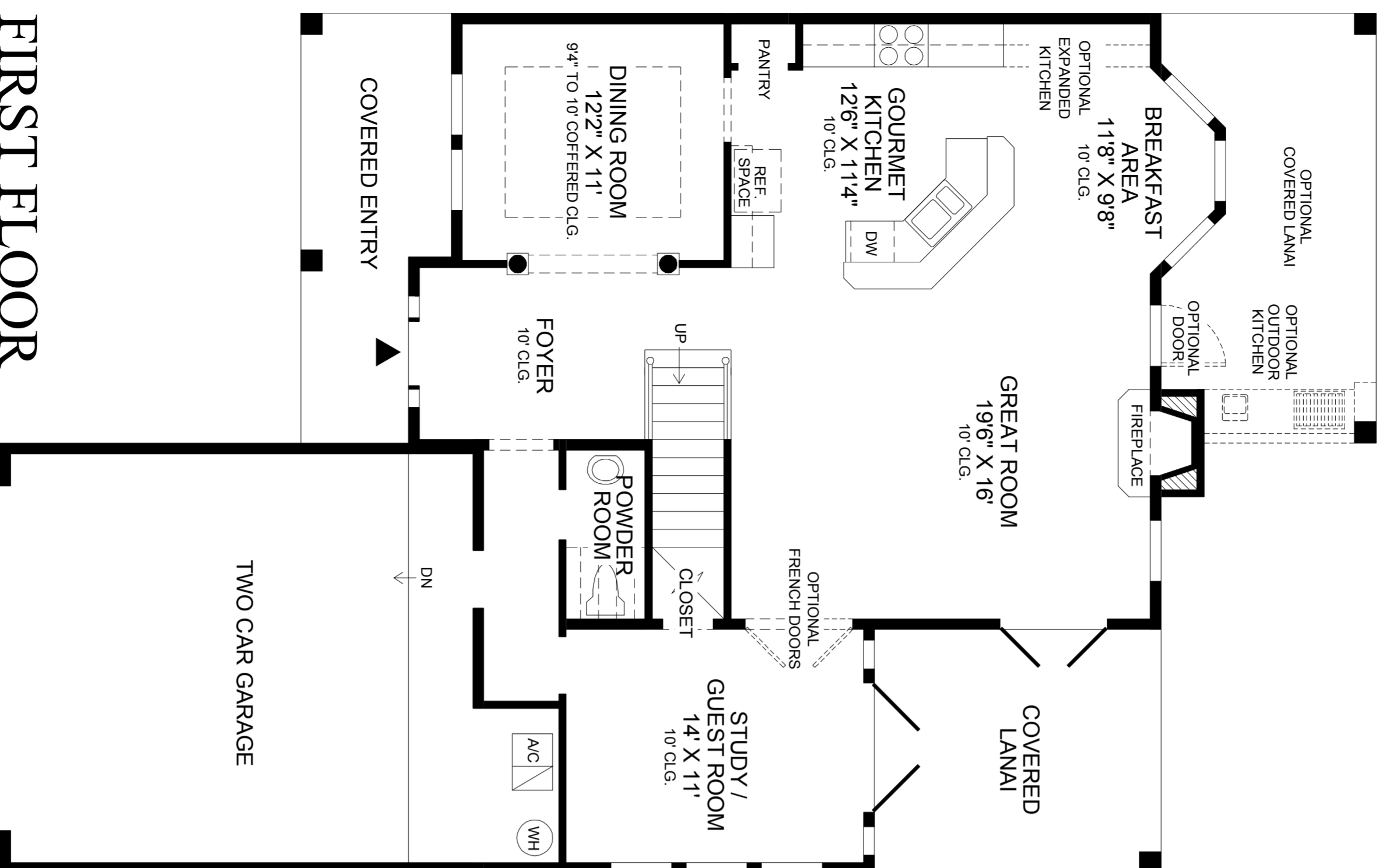
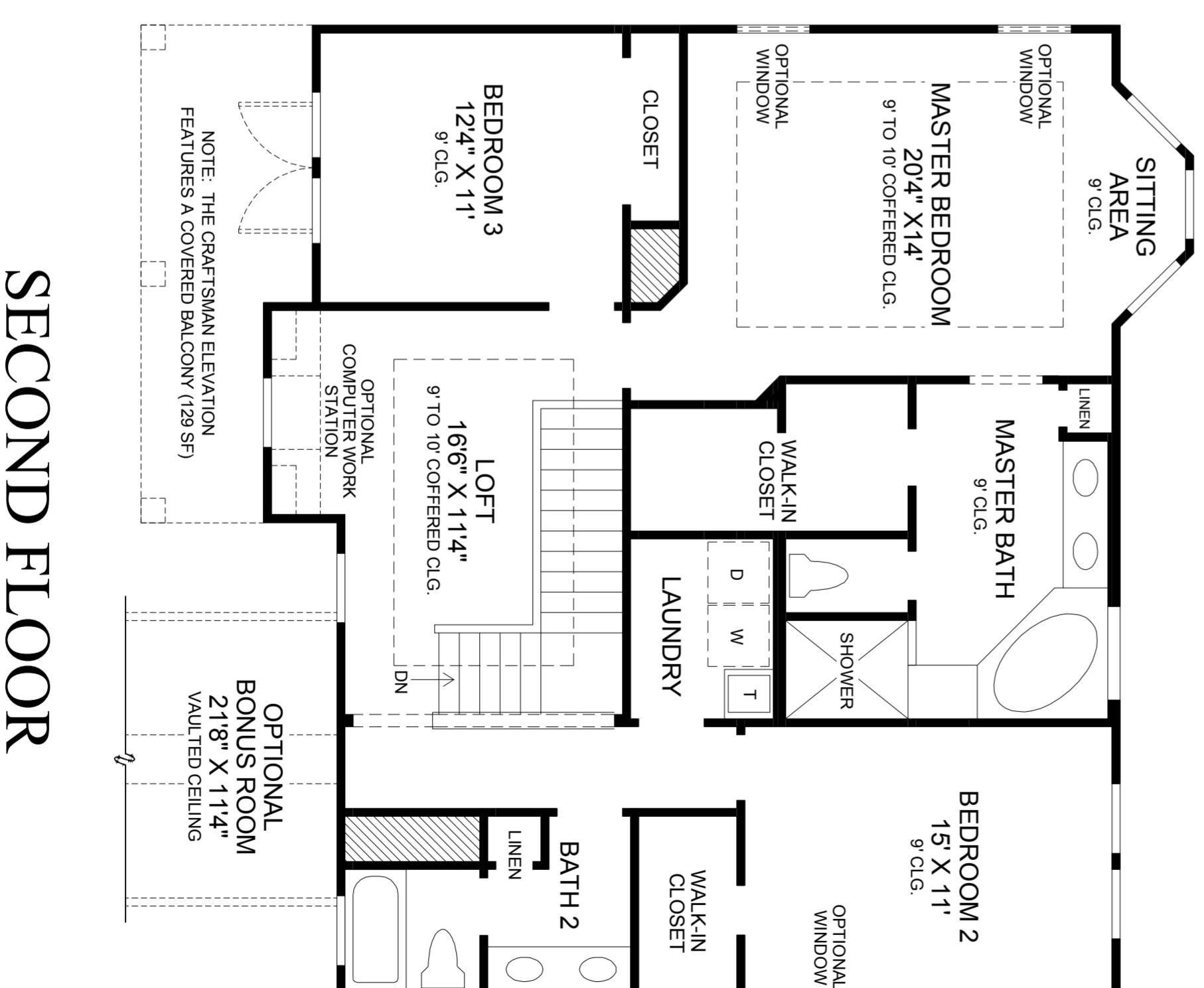


DRAFT



First Floor	1158 sq. ft.
Second Floor	1284 sq. ft.
Air Conditioned Living Area	2442 sq. ft.
Covered Lanai	151 sq. ft.
Covered Entry	123 sq. ft.
Garage	470 sq. ft.
Total	3186 sq. ft.
Optional Bonus Room	264 sq. ft.



A charming covered entry opens to an inviting foyer which is accented by graceful arched openings. An elegant formal dining room is adjacent to the foyer and is visually enhanced by decorative columns and a beautiful coffered ceiling.

The well-equipped gourmet kitchen features a separate pantry and a raised snack bar that overlooks a sunlit breakfast area and an expansive great room with a custom built-in fireplace and French doors that open to the covered lanai.

Upstairs, the master bedroom suite is highlighted by a sitting area with a bay window, a coffered ceiling and a luxurious master bath with a large walk-in closet, dual vanities, a Roman tub, a separate shower and a private water closet. The second floor also includes a versatile loft which adjoins two additional bedrooms that share a full bath.

This family oriented home is further enhanced by a second floor laundry room, a conveniently located powder room, a private study which can be converted to a first-floor guest suite, and a two-car garage.

THE STONEBROOK

FIRST FLOOR

OPTIONAL BEDROOM IN LIEU OF STUDY

SECOND FLOOR

All dimensions are approximate, shown to the maximum dimensions of each room, and are subject to field variation. Dimensions should not be used to calculate room square footage. Some windows, exterior features, ceiling heights, and floor plans may vary with elevations. Features may also vary from community to community. Please consult a Sales Manager for details. Options purchased must be specified in exhibit B.

Toll Brothers
America's Luxury Home Builder™

tollbrothers.com



The floor plans and elevations of Toll Brothers homes are copyrighted. We have enforced and will continue to enforce our federal copyrights to protect the investment of our home buyers.

This insert was produced using recycled products.



♻️

♻️