

# THE TERRANO

This outstanding two-story home features a grand foyer opening to a separate formal living room and dining room accented by large glass doors leading to an atrium courtyard.

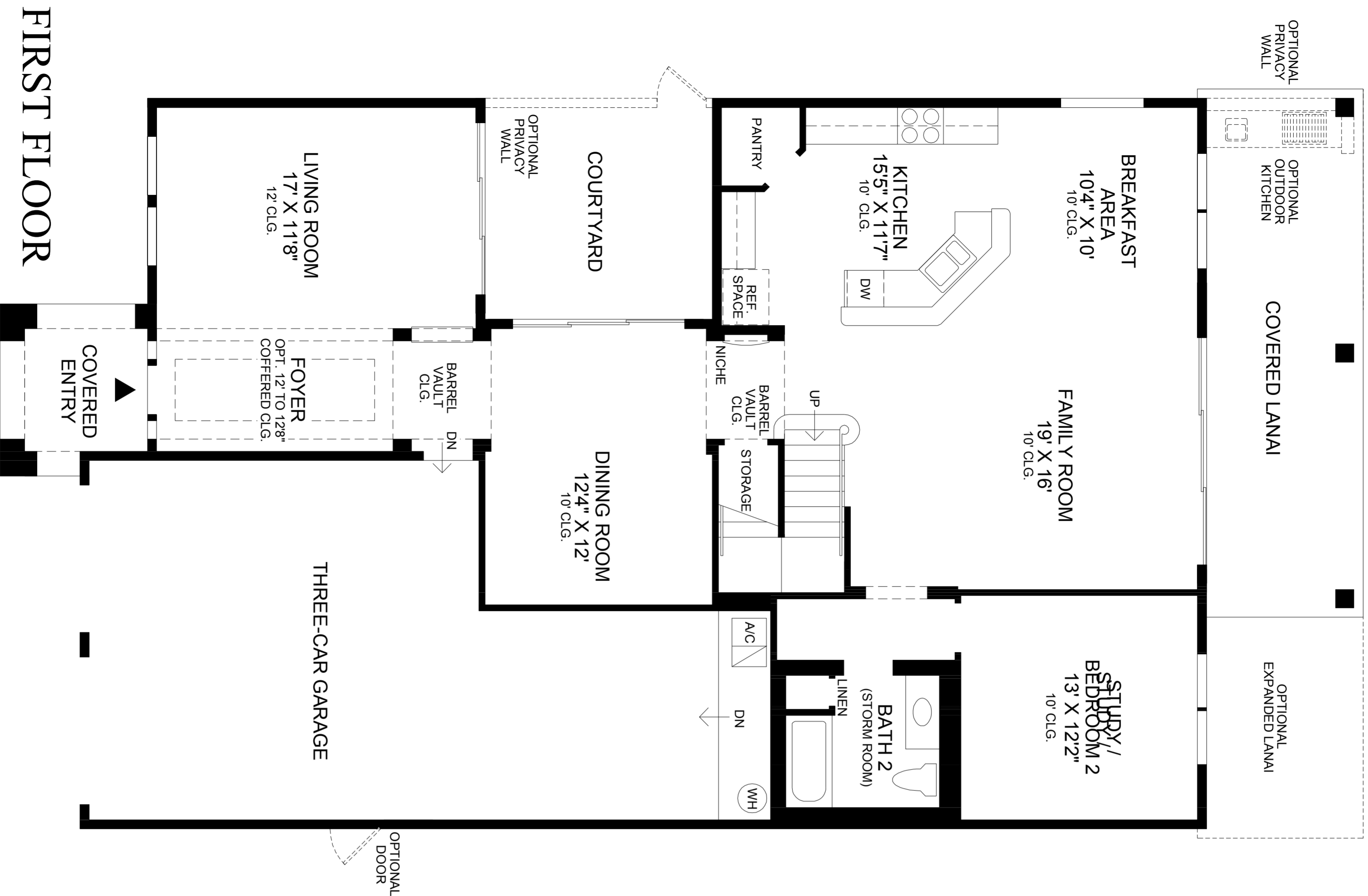
A well-appointed kitchen opens to a family room and separate breakfast area with direct access to the covered lanai.

Upstairs, the master bedroom suite includes a separate sitting area and is enhanced by a coffered ceiling, large walk-in closet and sumptuous master bath with a Roman tub, large shower, his-and-her vanities, and private water closet.

Additional features include a three-car garage, private study and a spacious loft with two additional bedrooms and large laundry room on the second floor.

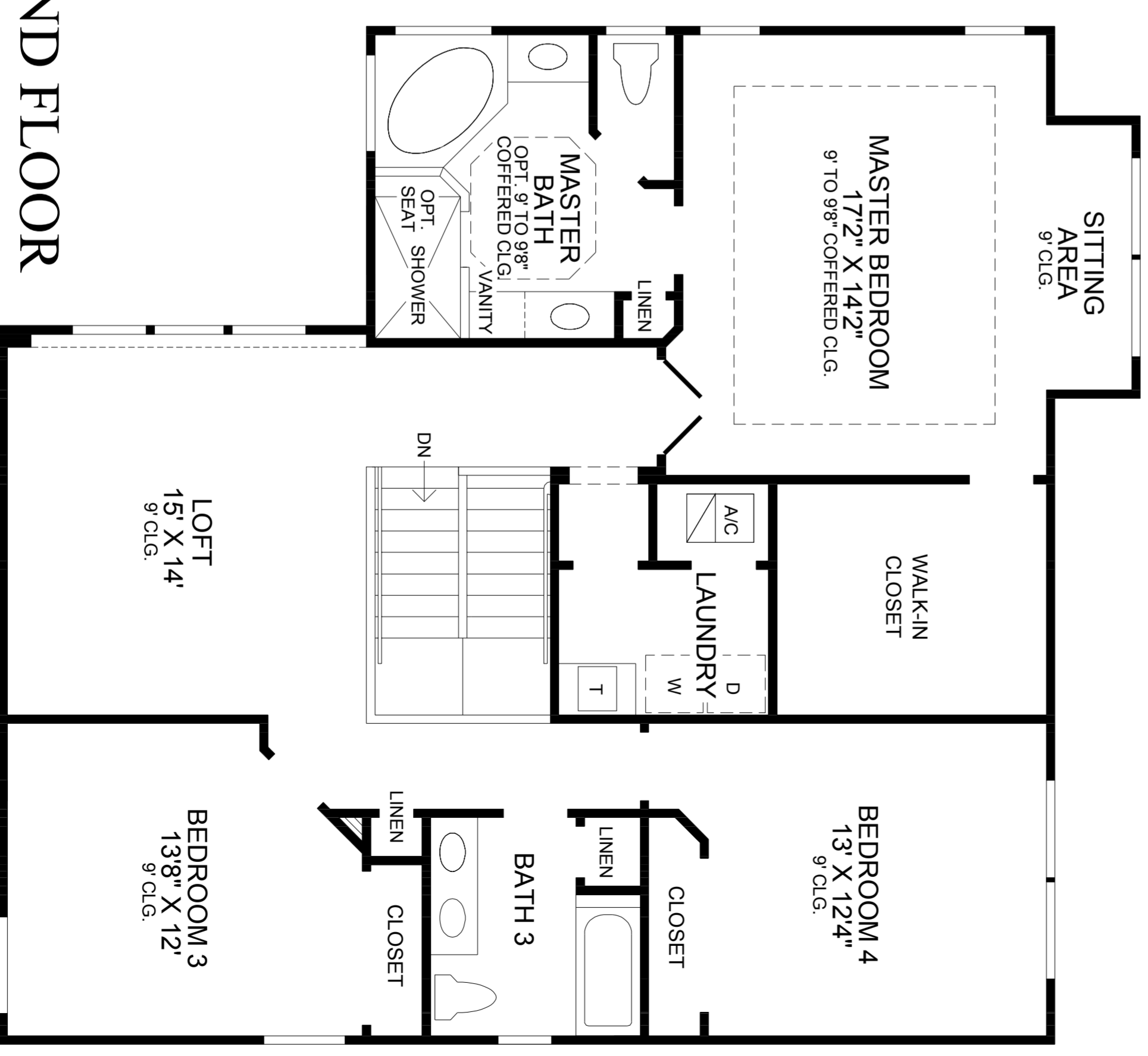
**DRAFT**

|                             |              |
|-----------------------------|--------------|
| First Floor                 | 1581 sq. ft. |
| Second Floor                | 1437 sq. ft. |
| Air Conditioned Living Area | 3018 sq. ft. |
| Covered Lanai               | 221 sq. ft.  |
| Covered Entry               | 70 sq. ft.   |
| Garage                      | 632 sq. ft.  |
| Total                       | 3941 sq. ft. |



## FIRST FLOOR

## SECOND FLOOR



All dimensions are approximate, shown to the maximum dimensions of each room, and are subject to field variation. Dimensions should not be used to calculate room square footage. Some windows, exterior features, ceiling heights, and floor plans may vary with elevations. Features may also vary from community to community. Please consult a Sales Manager for details. Options purchased must be specified in exhibit B.

(FL-COAB622)\_0428 ©2006 TOLL BROTHERS, INC. (TRAO)

**Toll Brothers**  
America's Luxury Home Builder™  
tollbrothers.com



The floor plans and elevations of Toll Brothers homes are copyrighted. We have enforced and will continue to enforce our federal copyrights to protect the investment of our home buyers.

This insert was produced using recycled products.