

THE ROSEBERRY

A courtyard entry opens to an inviting foyer that is graced by charming archways that lead to the formal living and dining rooms.

The well-equipped kitchen features a center work island, a separate pantry, a raised snack bar and a separate breakfast area with direct access to the covered lanai. The adjacent family room boasts an impressive vaulted ceiling and a fireplace with optional custom built-in cabinetry.

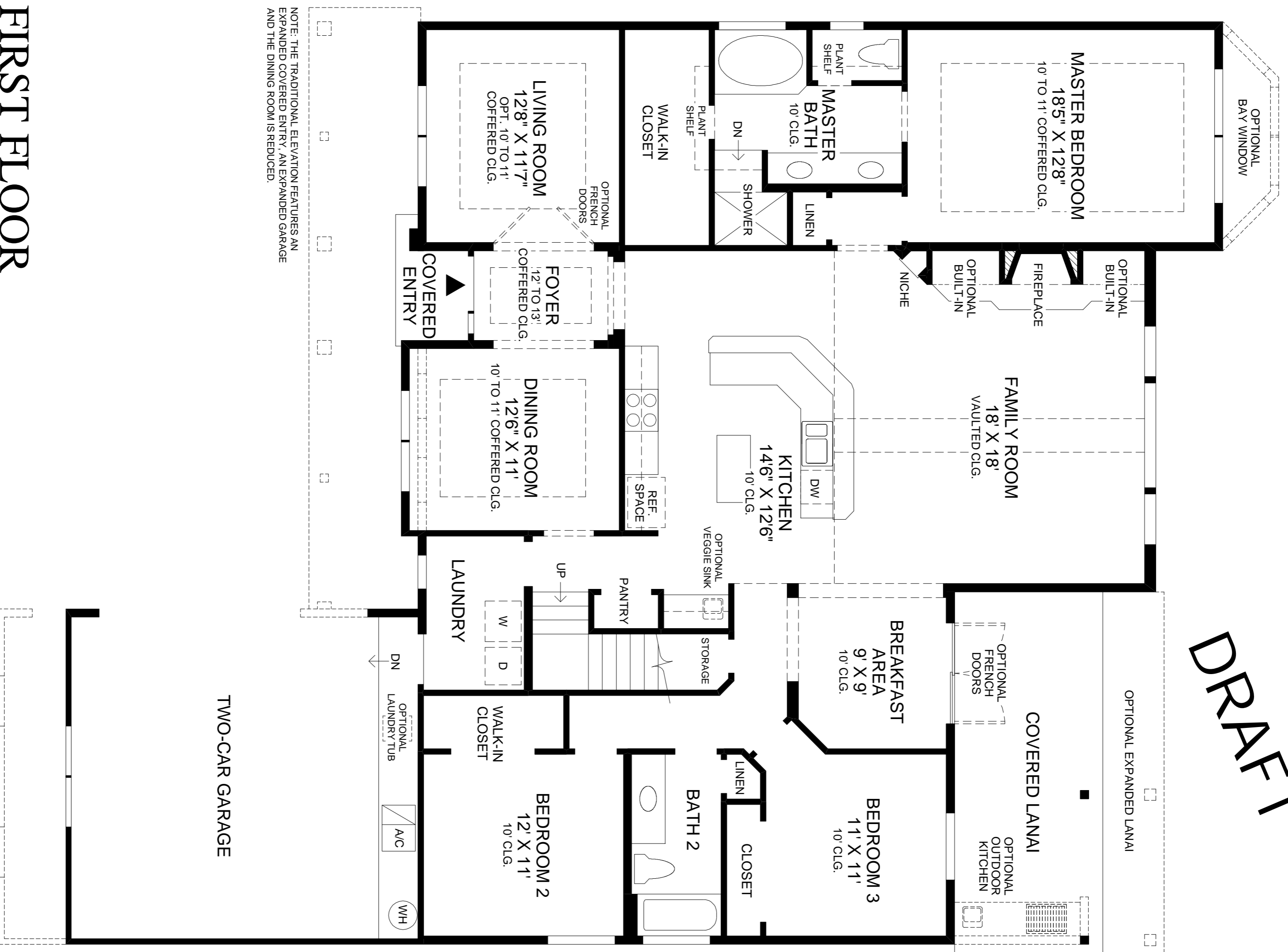
The master bedroom suite features a luxurious master bath with dual vanities, Roman tub, separate shower, private water closet, and large walk-in closet.

Upstairs, a large bonus room and full bath can be used as a private guest suite. This versatile home is further enhanced by two additional first floor bedrooms, a separate laundry room and a two-car garage.

First Floor	2218 sq. ft.
Second Floor	295 sq. ft.
Air Conditioned Living Area	2513 sq. ft.
Covered Lanai	193 sq. ft.
Covered Entry	26 sq. ft.
Garage	420 sq. ft.
Total	3152 sq. ft.

DRAFT

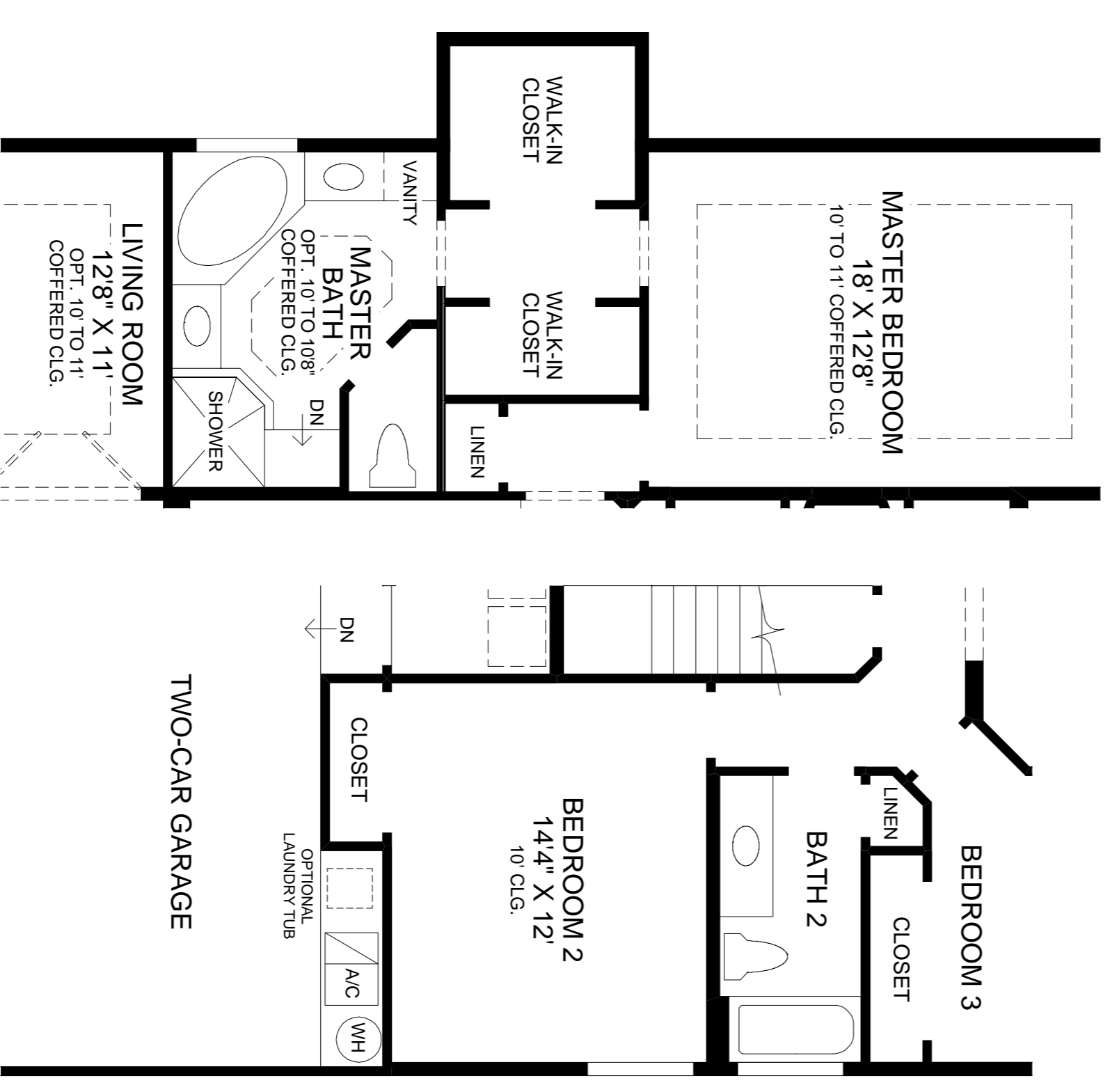
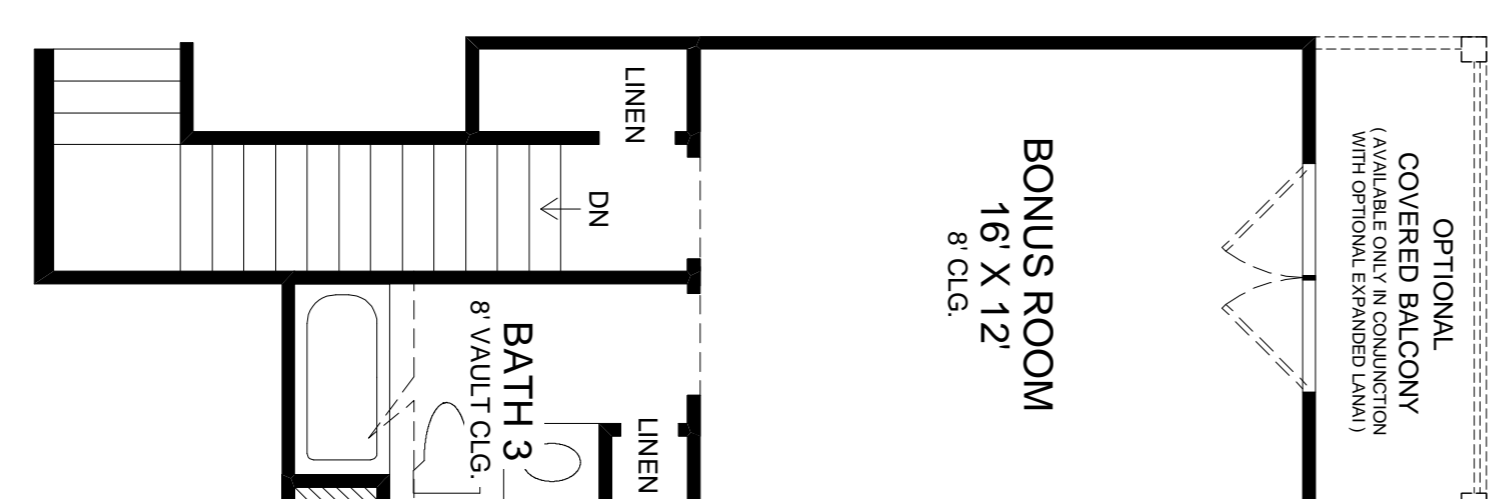
NOTE: THE OPTIONAL BAY WINDOW FEATURES AN ADDITIONAL 34 SQ. FT. OF AIR CONDITIONED LIVING AREA.



NOTE: THE TRADITIONAL ELEVATION FEATURES AN EXPANDED COVERED ENTRY, AN EXPANDED GARAGE AND THE DINING ROOM IS REDUCED.

FIRST FLOOR

SECOND FLOOR



OPTIONAL EXPANDED MASTER BATH

OPTIONAL EXPANDED BEDROOM 2

All dimensions are approximate, shown to the maximum dimensions of each room, and are subject to field variation. Dimensions should not be used to calculate room square footage. Some windows, exterior features, ceiling heights, and floor plans may vary with elevations. Features may also vary from community to community. Please consult a Sales Manager for details. Options purchased must be specified in exhibit B.

(PLN-MASTER)_0417 © 2006 TOLL BROTHERS, INC. (RSBY)

Toll Brothers
America's Luxury Home Builder™
tollbrothers.com



The floor plans and elevations of Toll Brothers homes are copyrighted. We have endeavored and will continue to enhance our Federal copyrights to protect the investment of our home buyers.

This insert was produced using recycled products.