

MOULTRIE



◆ **MASTERCRAFT.** ◆
BUILDER GROUP



MOULTRIE COASTAL



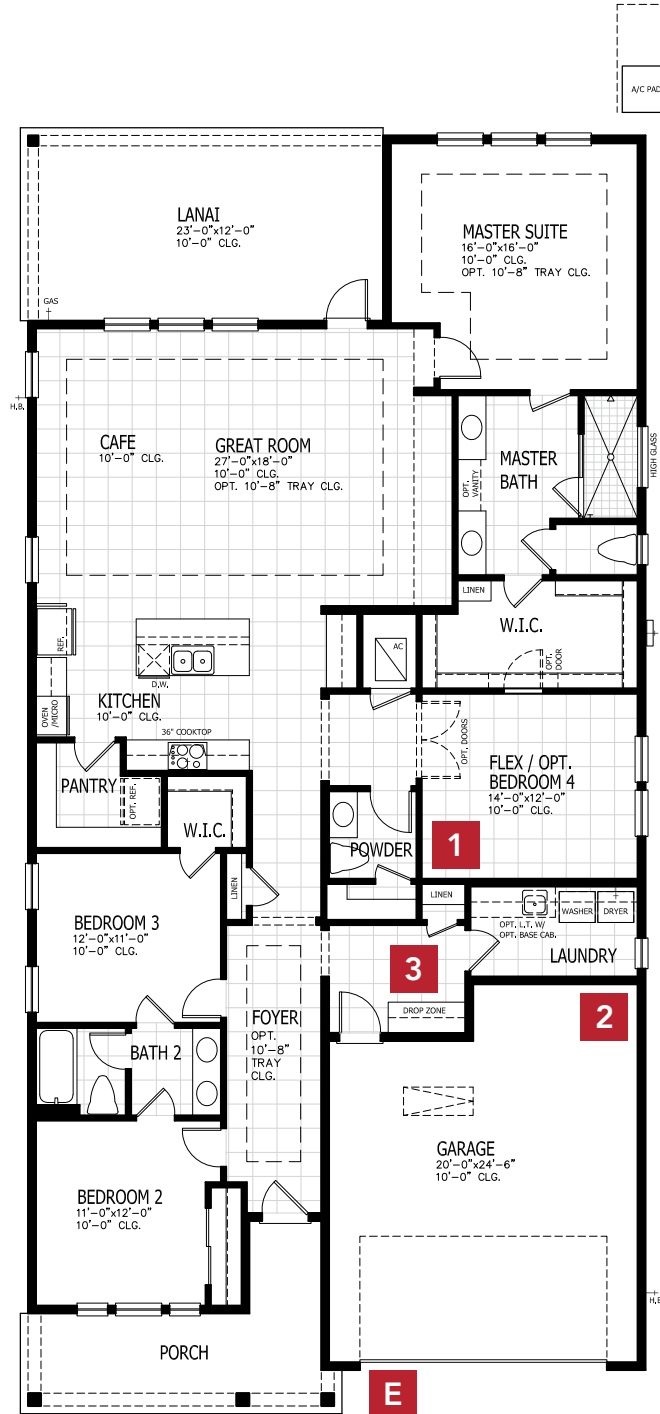
MOULTRIE CRAFTSMAN



MOULTRIE FARMHOUSE

MOULTRIE COASTAL

FIRST FLOOR



3-5 BEDROOMS

2.5-4 BATHROOMS

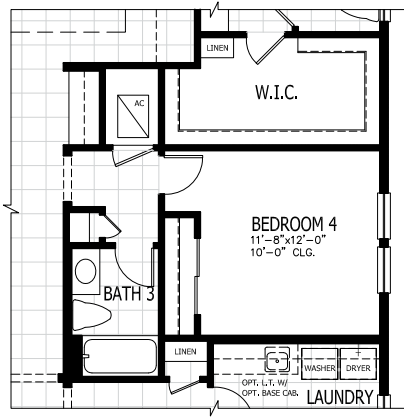
2 CAR GARAGE

2,343-2,935 SQUARE FEET

In the interest of continuous product improvements and to meet changing market conditions, MasterCraft Builder Group reserves the right to modify floor plans, exterior elevations, specifications, features, prices and product types without prior notice or obligation. Some features may vary from plan to plan. All plans, elevation renderings, and artist's conceptions are not necessarily to scale. All square footages are approximate. Window size, type and location may vary with each elevation. 05/19/2020

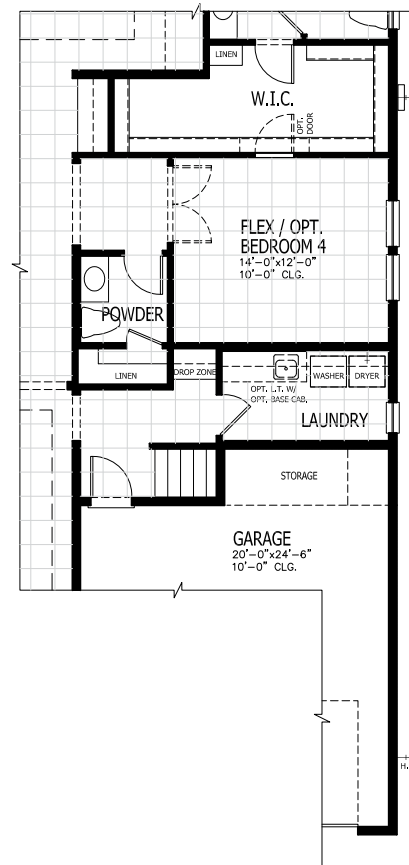
MOULTRIE FLOOR PLAN OPTIONS

1 BEDROOM 4

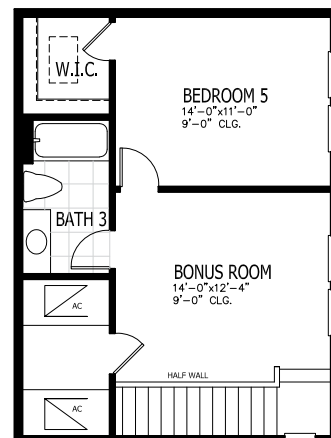


3 BONUS ROOM

MAIN FLOOR

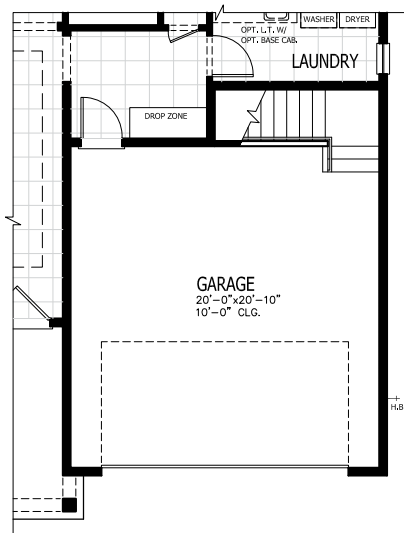


UPPER FLOOR

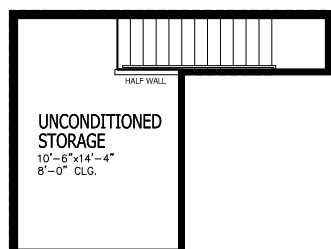


2 ATTIC STORAGE

MAIN FLOOR

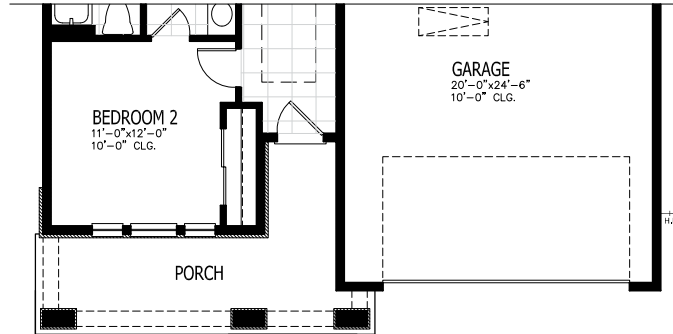


ATTIC



MOULTRIE OTHER ELEVATIONS

E CRAFTSMAN



E FARMHOUSE

