



# ACADIA 2642

Heritage Collection



3

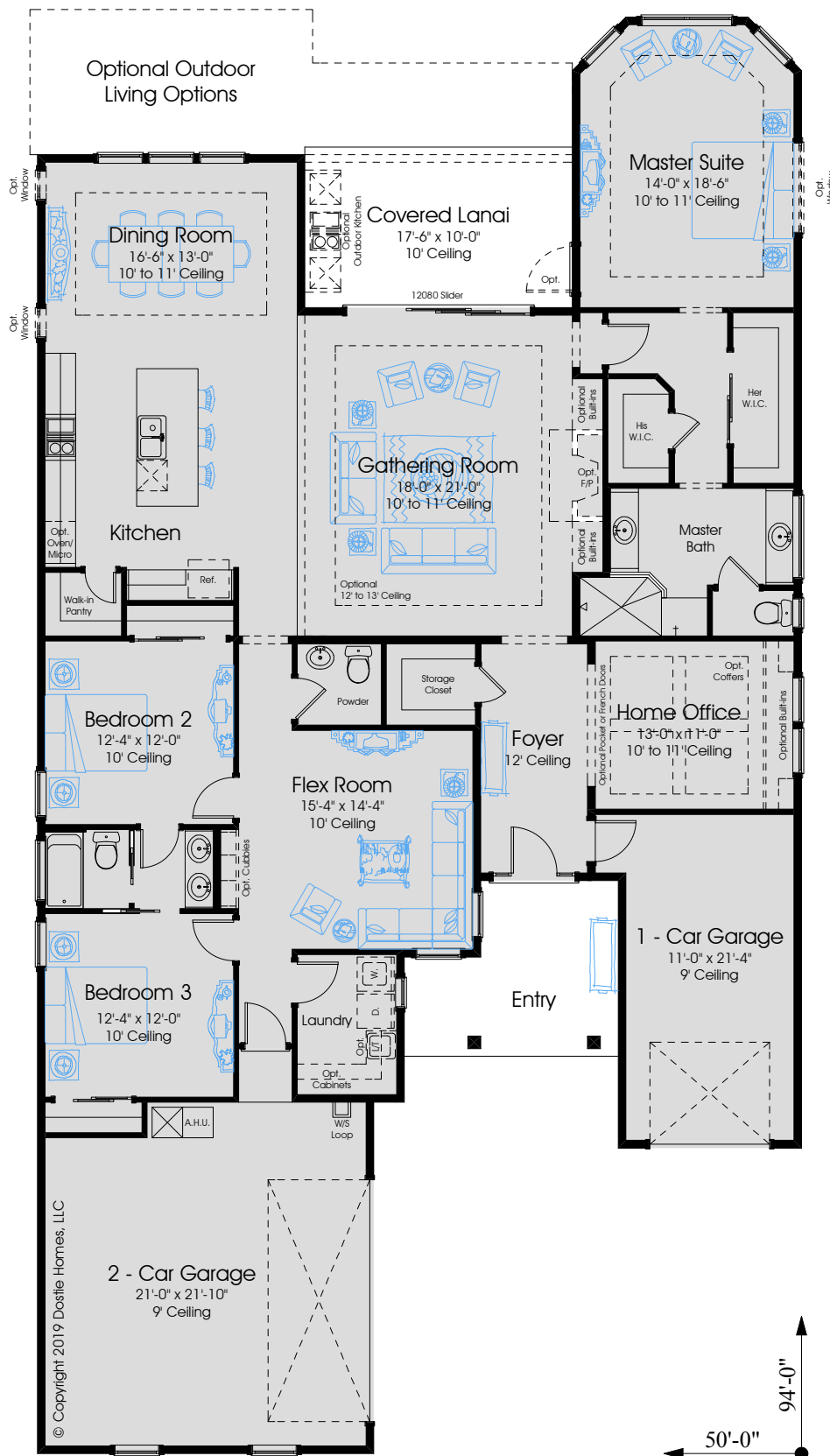


2.5



3

DRAFT



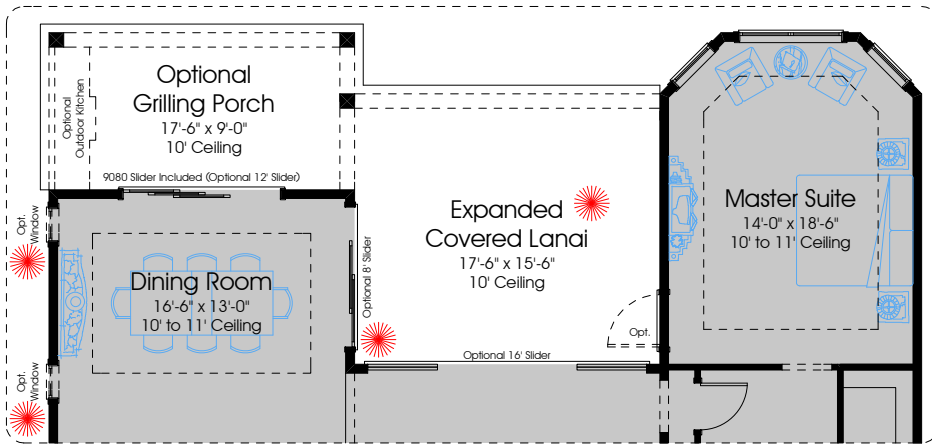
First Floor Plan - Farmhouse

In the interest of continuous improvement, and to meet the changing market conditions, the builder reserves the right to modify the plans, specifications and products without notice or obligation. Square footage shown is an estimate and may vary. Depictions of homes and features are artist and designer conceptions. Landscape, interior surfaces and finishes may be decorator suggestions that are not included in purchase price. This ad contains general information about the community and is not an offer for the purchase of a new home.

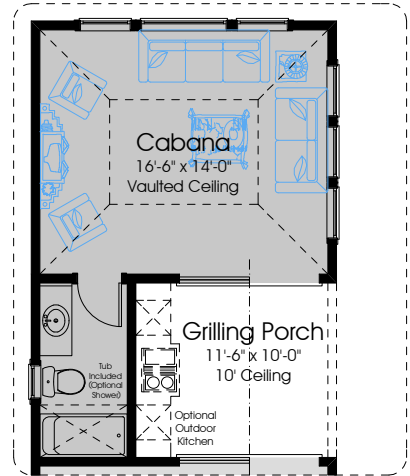
1st FLOOR A/C:	2642
2nd FLOOR A/C:	N/A
TOTAL A/C:	2642
COVERED PORCHES:	304
GARAGES:	770
TOTAL COVERED:	3716

ACADIA (Acadia National Park - Bar Harbor, ME)  
Includes 47,000 acres of Atlantic coast recreation area primarily on Maine's Mount Desert Island.

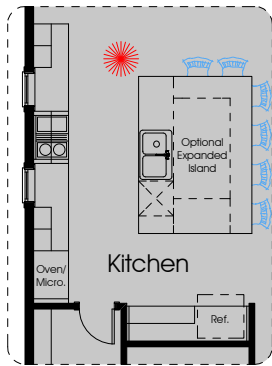
# 2642 Pre-Planned Options



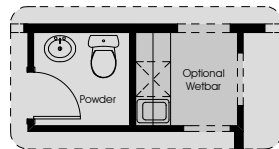
Optional Expanded Covered Lanai and Optional Grilling Porch  
(Other options shown: Optional Windows and Optional Sliders at Dining Room, Optional 16' Slider at Gathering Room)



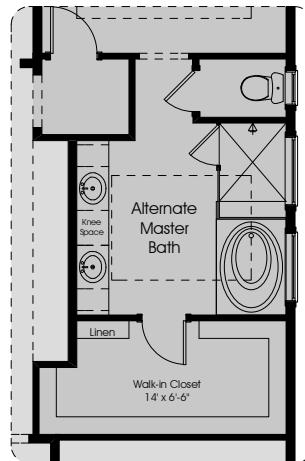
Optional Cabana and Grilling Porch w/Pool Bath (adds 322 of A/C Sq. Ft.)



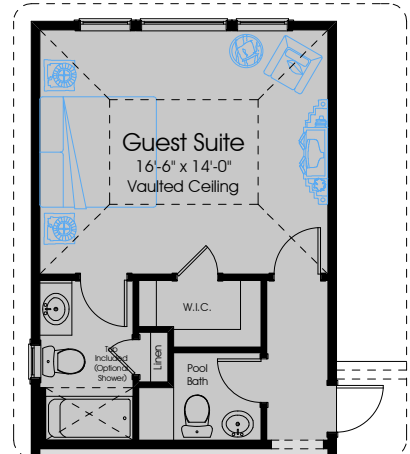
Expanded Gourmet Kitchen



Optional Wetbar  
I.L.O. Storage Closet



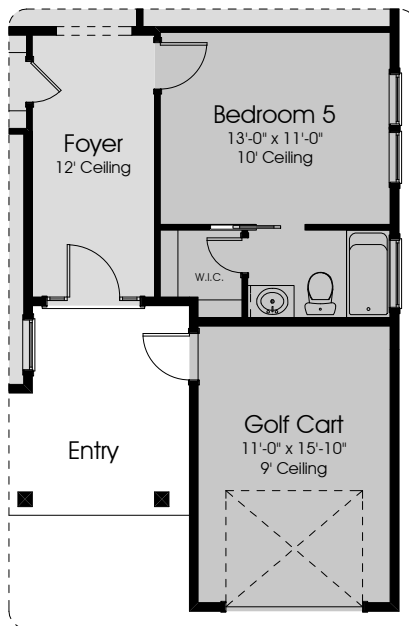
Optional Master Bathroom



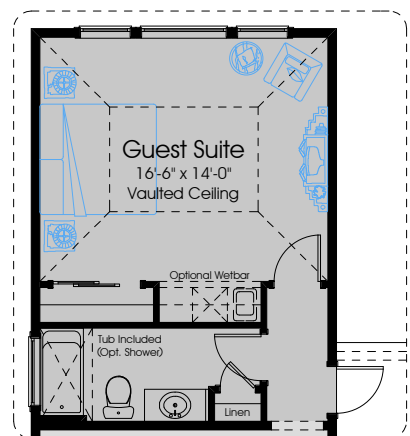
Optional Guest Suite w/Full Bath and Pool Bath (adds 420 of A/C Sq. Ft.)



Optional Bedroom 4 and Full Bath



Optional Bedroom 5 and Full Bath  
(to Home Office and a portion of 1-car garage)



Optional Guest Suite w/Pool Bath  
(adds 394 of A/C Sq. Ft.)

(Indicates option is shown in Model Home)

## HIGHLIGHTS:

A rocky coastline, sandy beaches and mountains including the tallest mountain on the eastern coastline.