



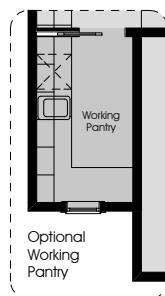
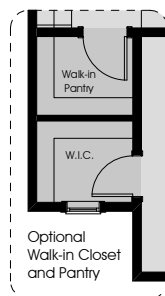
4



3.5



2.5

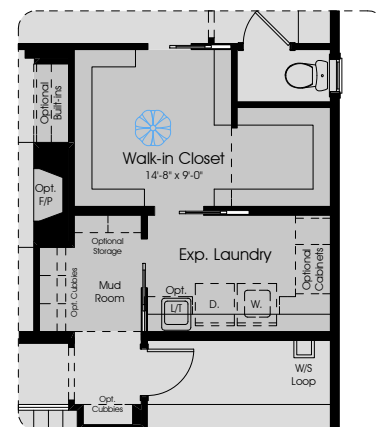
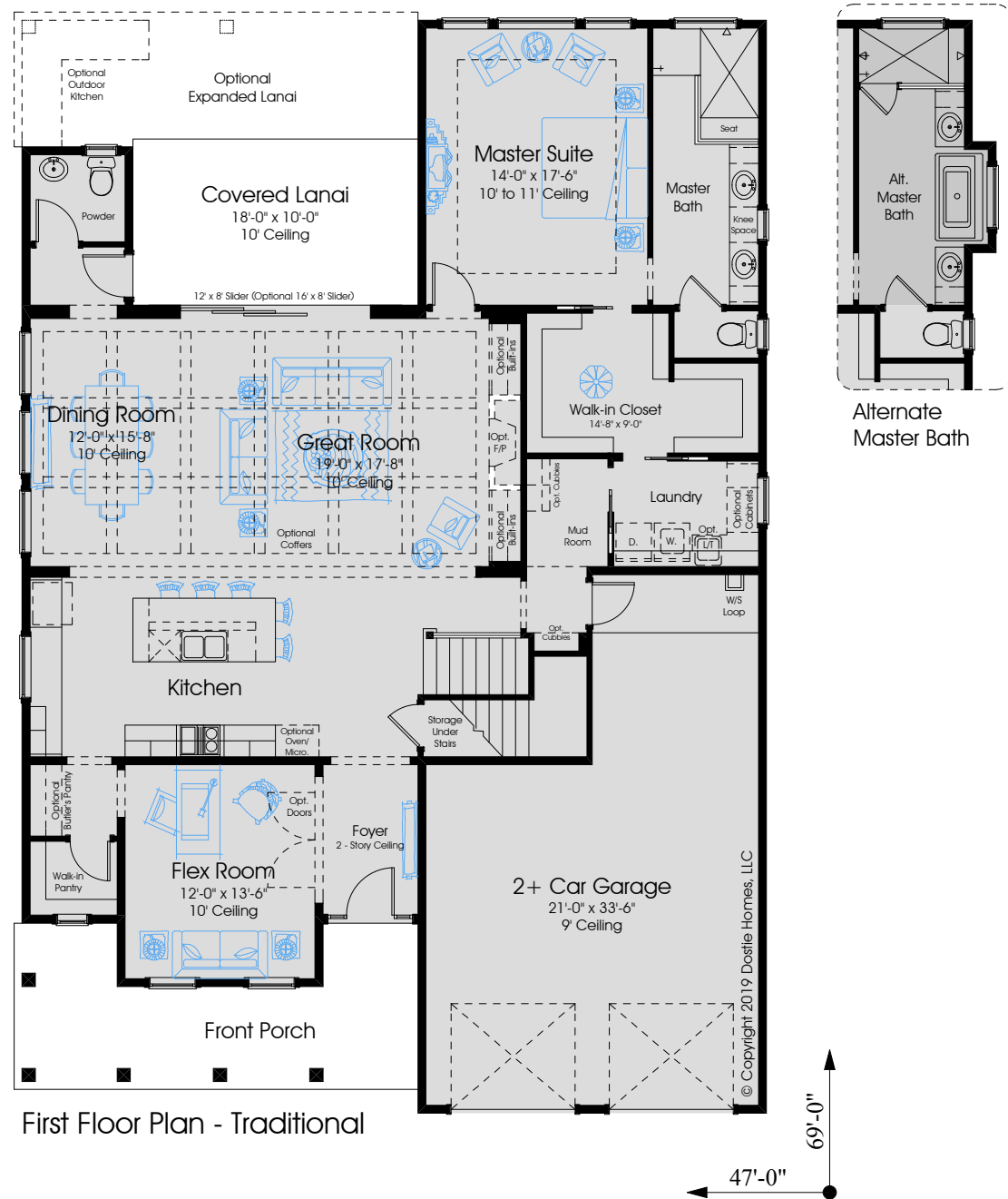


DRAFT

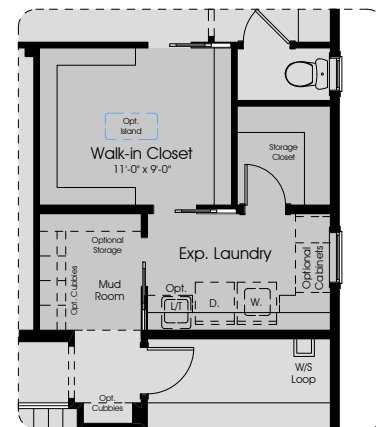
# DENALI 3145

# 3145 Pre-Planned Options

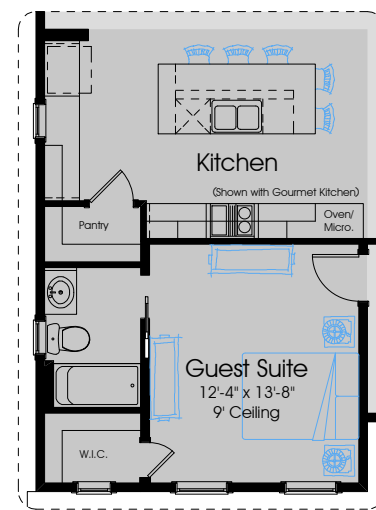
DRAFT



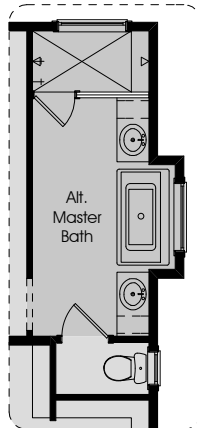
Opt. Exp. Laundry and Mudroom w/ Fireplace



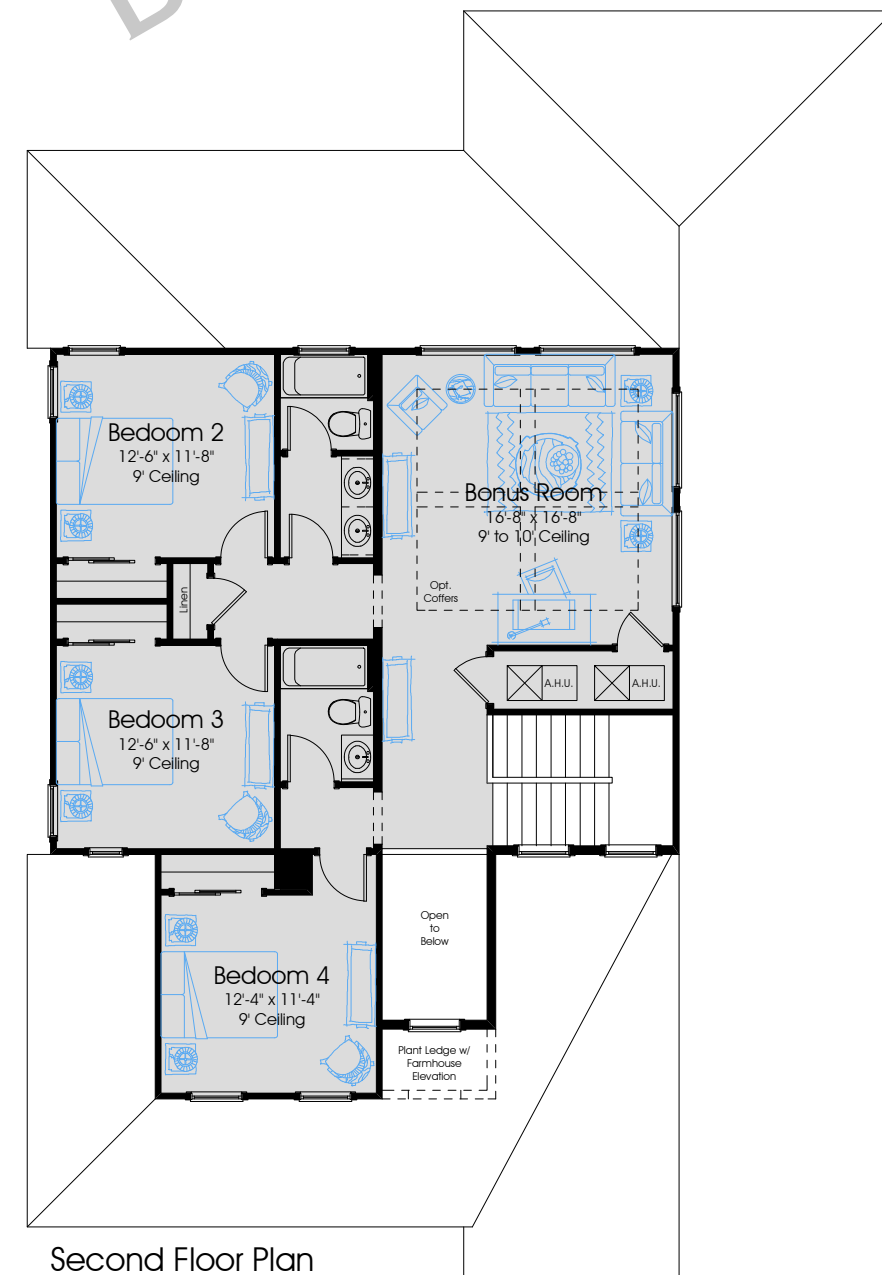
Opt. Exp. Laundry and Mudroom w/ Storage Closet



Optional Guest Suite i.l.o. Flex Room



Alternate Master Bath



1st FLOOR A/C:	2004
2nd FLOOR A/C:	1141
TOTAL A/C:	3145
COVERED PORCHES:	378
GARAGES:	663
TOTAL COVERED:	4156

In the interest of continuous improvement, and to meet the changing market conditions, the builder reserves the right to modify the plans, specifications and products without notice or obligation. Square footage shown is an estimate and may vary. Depictions of homes and features are artist and designer conceptions. Landscape, interior surfaces and finishes may be decorator suggestions that are not included in purchase price. This ad contains general information about the community and is not an offer for the purchase of a new home.

**HIGHLIGHTS:**

At over 20,000 feet high, Denali is North America's tallest peak. Tundra, forests and glaciers blanket the landscape.

DENALI (Denali National Park and Preserve - Alaska)  
Encompasses 6 million acres of Alaska's interior wilderness, its centerpiece being Denali (fka Mount McKinley)