



# AVALON 3205

# 3205 Pre-Planned Options



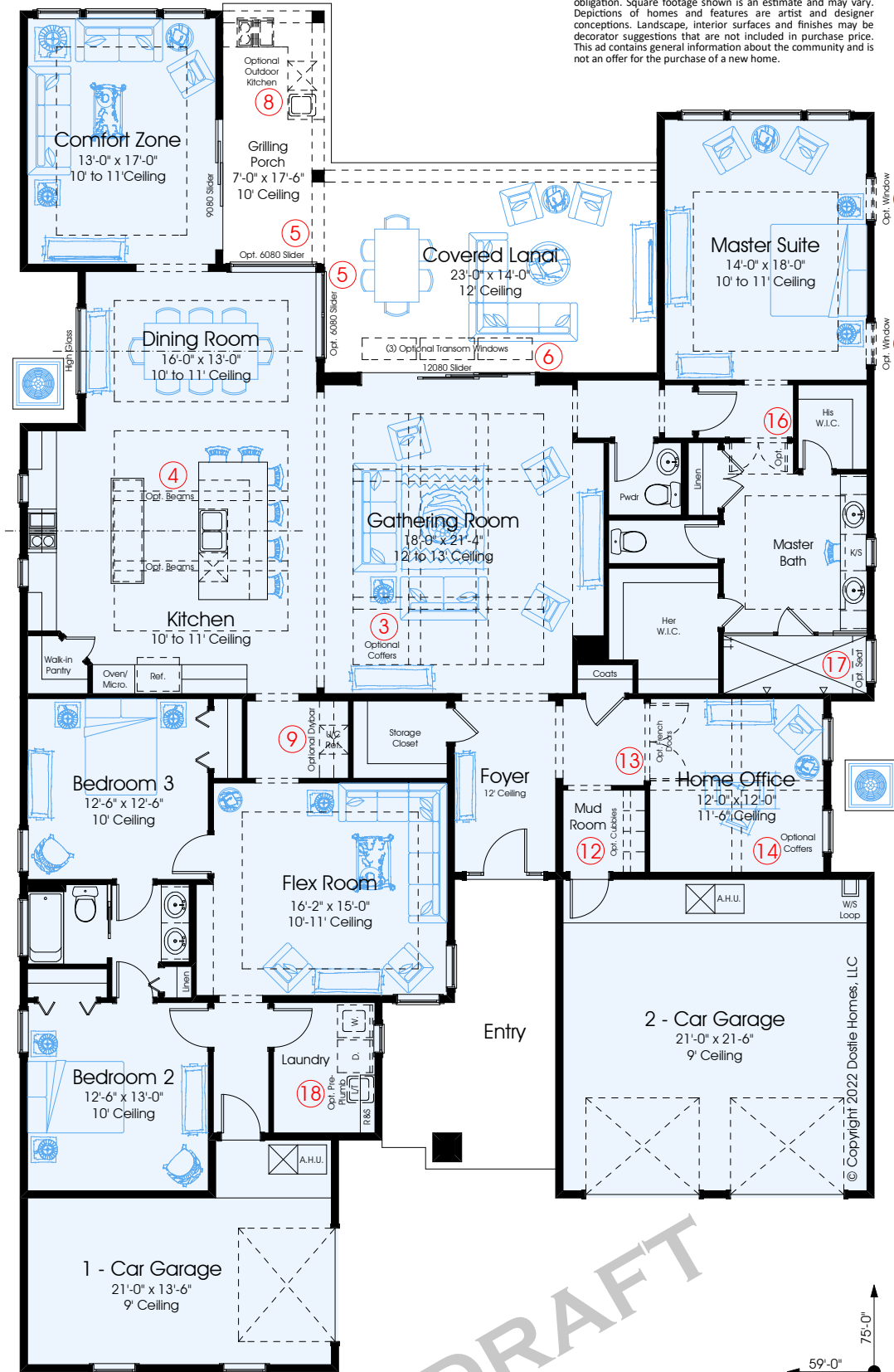
3



2.5



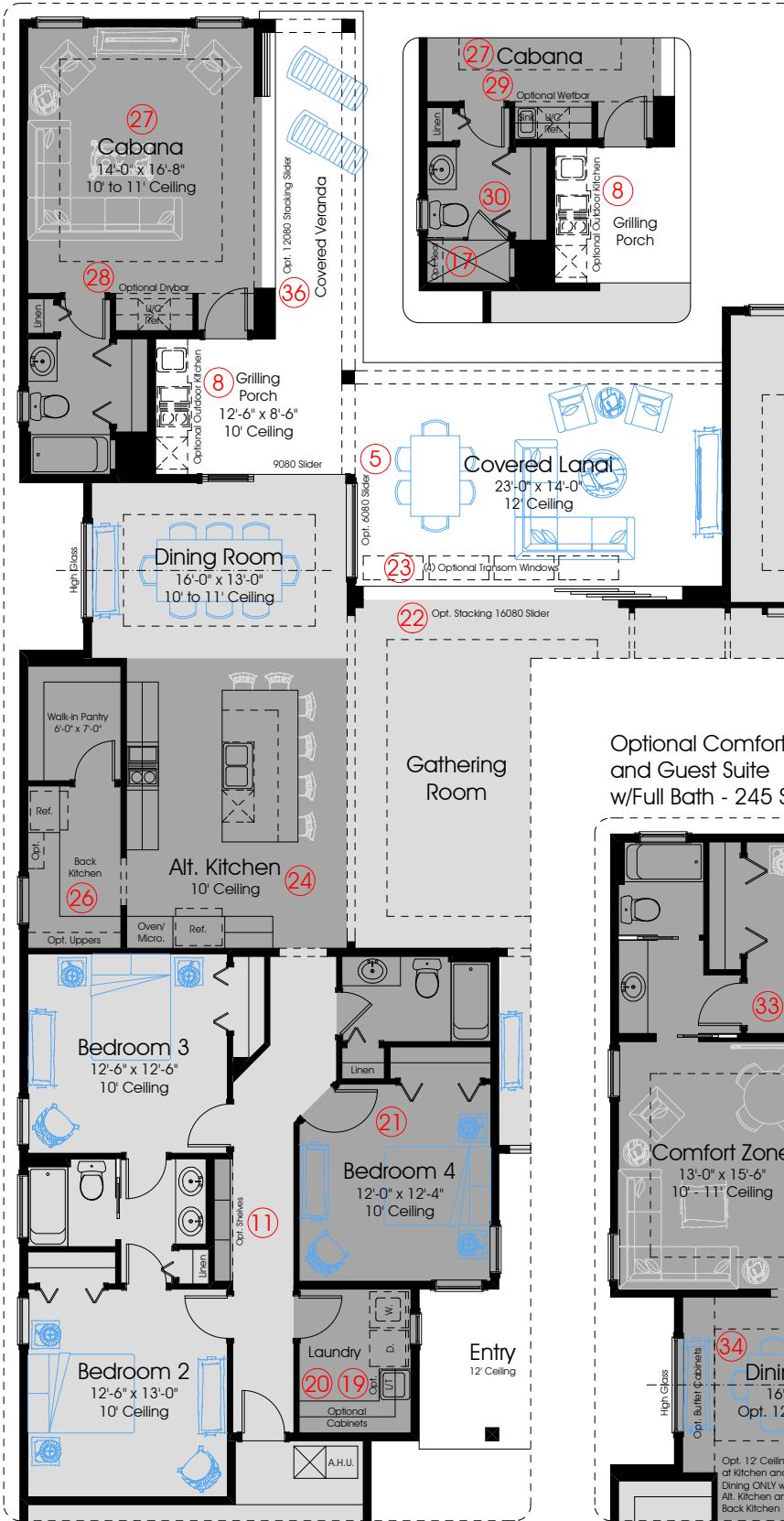
3



First Floor Plan - Coastal

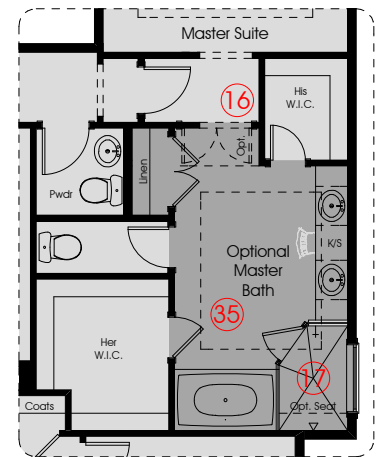
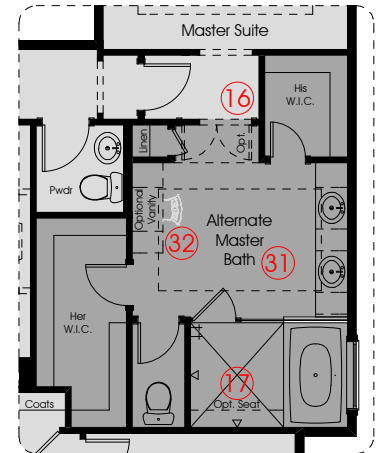
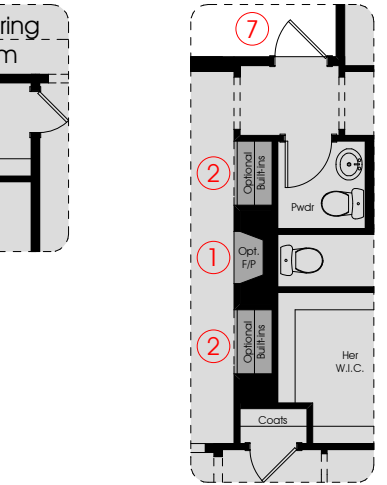
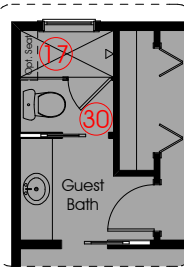
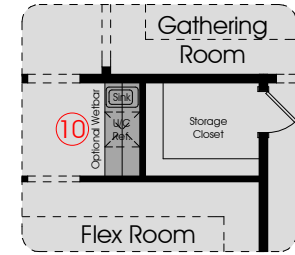
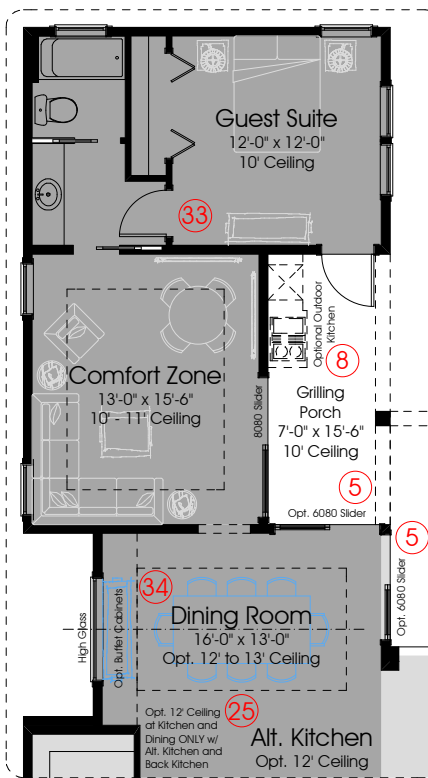
In the interest of continuous improvement, and to meet the changing market conditions, the builder reserves the right to modify the plans, specifications and products without notice or obligation. Square footage shown is an estimate and may vary. Depictions of homes and features are artist and designer conceptions. Landscape, interior surfaces and finishes may be decorator suggestions that are not included in purchase price. This ad contains general information about the community and is not an offer for the purchase of a new home.

Optional Cabana w/Full Bath - Adds 131 Sq. Ft. (Includes 101 Sq. Ft. Grilling Porch and Cov. Veranda)



Optional Bedroom 4 and Full Bath i.l.o. Flex Room and Storage Closet

Optional Comfort Zone and Guest Suite w/Full Bath - 245 Sq. Ft.



Optional Master Bath

- Options Shown:**
- 1) Optional Fireplace
  - 2) Optional Built-ins
  - 3) Optional Coffered Ceiling at Gathering Room
  - 4) Optional (2) Beams at Kitchen
  - 5) Optional 6080 Slider i.l.o. Windows at Dining
  - 6) Optional (3) Transom Windows over 12080 Slider
  - 7) Optional 3080 French Door
  - 8) Optional Plumbing, Electrical and Venting for Future Outdoor Kitchen on Lanai
  - 9) Optional Drybar at Gallery
  - 10) Optional Wetbar at Gallery
  - 11) Optional Shelves at Flex Room Hall
  - 12) Optional Cubbies at Mudroom
  - 13) Optional Double French Doors at Home Office
  - 14) Optional Coffered Ceiling at Back Kitchen
  - 15) Optional Window at Master Bedroom
  - 16) Optional Pocket Door at Master Bathroom
  - 17) Optional Seat at Shower
  - 18) Optional Pre-Plumb L/T at Laundry Room
  - 19) Optional Cabinets at Laundry Room
  - 20) Optional Built-in L/T at Laundry Room
  - 21) Optional Bedroom 4 and Bath i.l.o. Flex Room
  - 22) Optional 16080 Stacking Slider i.l.o. 12080 Slider
  - 23) Optional (4) Transom Windows over 16080 Slider
  - 24) Alternate Kitchen and Back Kitchen
  - 25) Optional 12' Ceiling at Kitchen and Dining
  - 26) Optional Cabinetry at Back Kitchen
  - 27) Optional Cabana and Full Bath i.l.o. Comfort Zone
  - 28) Optional Drybar at Cabana
  - 29) Optional Wetbar at Cabana
  - 30) Optional Shower and Glass Enclosure
  - 31) Alternate Master Bath with Wet Suite
  - 32) Optional Vanity at Alternate Master Bath
  - 33) Comfort with Optional Guest Suite and Full Bath
  - 34) Optional Buffet Cabinets at Dining
  - 35) Optional Master Bath
  - 36) Optional 12080 Stacking Slider i.l.o. 9080 Slider

1st FLOOR A/C:	3205
2nd FLOOR A/C:	N/A
TOTAL A/C:	3205
COVERED PORCHES:	617
GARAGES:	783
TOTAL COVERED:	4605

DRAFT

AVALON (Avalon State Park - Fort Pierce, FL)  
 One of the state's newest seaside parks, it features over a mile of increasingly rare undeveloped beachfront.

HIGHLIGHTS:  
 Featuring a fragile dune ecosystem, the park is a habitat for many species of threatened endangered sea turtles.